

BPESC1 Antibody



PACO41874

Product Information

Size:

50ug

Reactivity:

Human

Source:

Rabbit

Isotype:

IgG

Applications:

ELISA, IHC

Recommended dilutions:

ELISA:1:2000-1:10000, IHC:1:20-1:200

Protein Background:

Gene ID:

BPESC1

Uniprot

Q9GZL8

Synonyms:

Putative BPES syndrome breakpoint region protein (BPES candidate 1), BPESC1

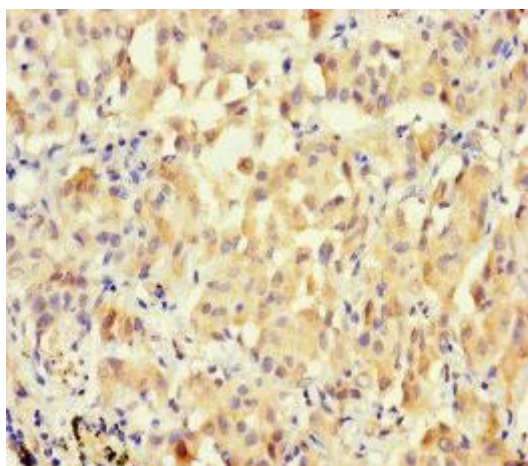
Immunogen:

Recombinant Human Putative BPES syndrome breakpoint region protein (1-116AA).

Storage:

Preservative: 0.03% Proclin 300. Constituents: 50% Glycerol, 0.01M PBS, PH 7.4

Product Images



Immunohistochemistry of paraffin-embedded human lung cancer using PACO41874 at dilution of 1:100.