

BEX2 Antibody



PACO41854

Product Information

Size:

50ug

Reactivity:

Human

Source:

Rabbit

Isotype:

IgG

Applications:

ELISA, IHC, IF

Recommended dilutions:

ELISA:1:2000-1:10000, IHC:1:20-1:200,
IF:1:50-1:500

Protein Background:

Regulator of mitochondrial apoptosis and G1 cell cycle in breast cancer. Protects the breast cancer cells against mitochondrial apoptosis and this effect is mediated through the modulation of BCL2 protein family, which involves the positive regulation of anti-apoptotic member BCL2 and the negative regulation of pro-apoptotic members BAD, BAK1 and PUMA. Required for the normal cell cycle progression during G1 in breast cancer cells through the regulation of CCND1 and CDKN1A. Regulates the level of PP2A regulatory subunit B and PP2A phosphatase activity.

Gene ID:

BEX2

Uniprot

Q9BXY8

Synonyms:

Protein BEX2 (Brain-expressed X-linked protein 2) (hBex2), BEX2

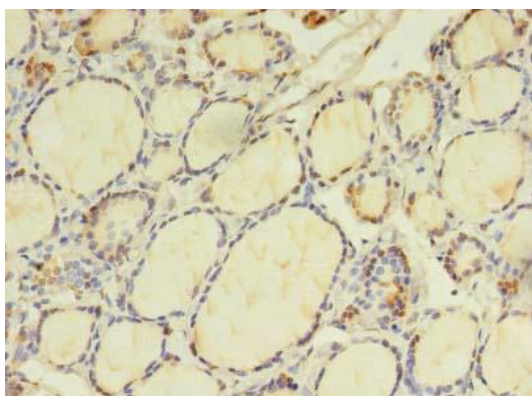
Immunogen:

Recombinant Human Protein BEX2 protein (1-128AA).

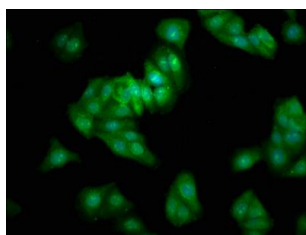
Storage:

Preservative: 0.03% Proclin 300. Constituents: 50% Glycerol, 0.01M PBS, PH 7.4

Product Images



Immunohistochemistry of paraffin-embedded human thyroid tissue using PACO41854 at dilution of 1:100.



Immunofluorescence staining of HepG2 cells with PACO41854 at 1:333, counter-stained with DAPI. The cells were fixed in 4% formaldehyde, permeabilized using 0.2% Triton X-100 and blocked in 10% normal Goat Serum. The cells were then incubated with the antibody overnight at 4°C. The secondary antibody was Alexa Fluor 488-conjugated AffiniPure Goat Anti-Rabbit IgG(H+L).