

# ZDHHC2 Antibody



PACO41806

---

## Product Information

**Size:**

50ug

**Reactivity:**

Human

**Source:**

Rabbit

**Isotype:**

IgG

**Applications:**

ELISA, IHC, IF

**Recommended dilutions:**

ELISA:1:2000-1:10000, IHC:1:20-1:200,  
IF:1:50-1:200

**Protein Background:**

Palmitoyltransferase specific for GAP43 and DLG4/PSD95.

**Gene ID:**

ZDHHC2

**Uniprot**

Q9UIJ5

**Synonyms:**

Palmitoyltransferase ZDHHC2 (EC 2.3.1.225) (Reduced expression associated with metastasis protein) (Ream) (Reduced expression in cancer protein) (Rec) (Zinc finger DHHC domain-containing protein 2) (DHHC-2) (Zinc finger protein 372), ZDHHC2, REAM REC ZNF372

**Immunogen:**

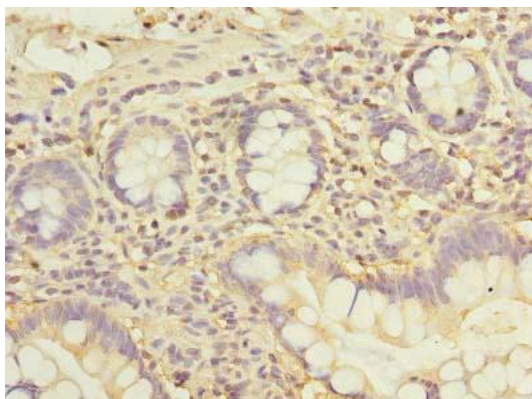
Recombinant Human Palmitoyltransferase ZDHHC2 protein (230-367AA).

**Storage:**

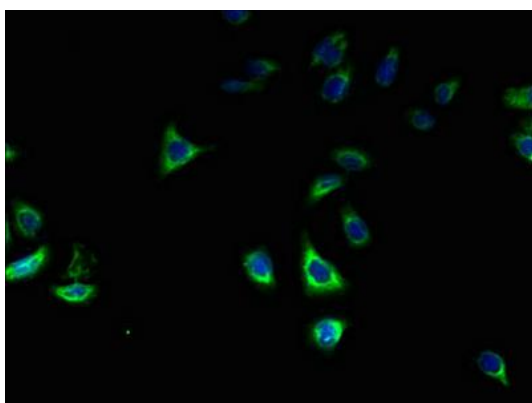
Preservative: 0.03% Proclin 300. Constituents: 50% Glycerol, 0.01M PBS, PH 7.4

## Product Images

---



Immunohistochemistry of paraffin-embedded human small intestine tissue using PACO41806 at dilution of 1:100.



Immunofluorescent analysis of HepG2 cells using PACO41806 at dilution of 1:100 and Alexa Fluor 488-conjugated AffiniPure Goat Anti-Rabbit IgG(H+L).