

# SEC14L4 Antibody



PACO41774

---

## Product Information

**Size:**

50ug

**Reactivity:**

Human

**Source:**

Rabbit

**Isotype:**

IgG

**Applications:**

ELISA, IHC

**Recommended dilutions:**

ELISA:1:2000-1:10000, IHC:1:20-1:200

**Protein Background:**

Probable hydrophobic ligand-binding protein; may play a role in the transport of hydrophobic ligands like tocopherol, squalene and phospholipids.

**Gene ID:**

SEC14L4

**Uniprot**

Q9UDX3

**Synonyms:**

SEC14-like protein 4 (Tocopherol-associated protein 3), SEC14L4, TAP3

**Immunogen:**

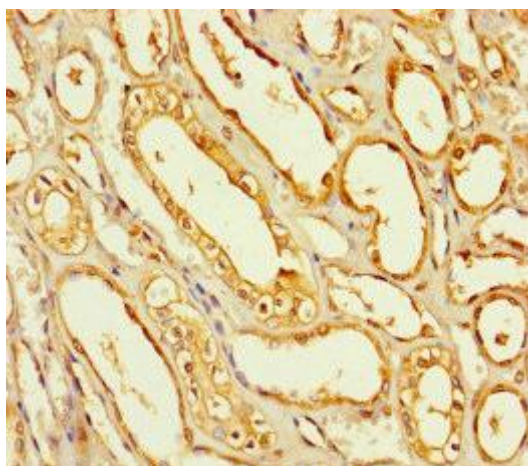
Recombinant Human SEC14-like protein 4 protein (201-360AA).

**Storage:**

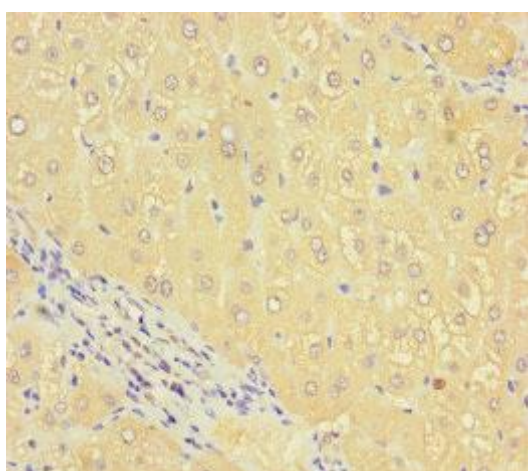
Preservative: 0.03% Proclin 300. Constituents: 50% Glycerol, 0.01M PBS, PH 7.4

## Product Images

---



Immunohistochemistry of paraffin-embedded human kidney tissue using PACO41774 at dilution of 1:100.



Immunohistochemistry of paraffin-embedded human liver tissue using PACO41774 at dilution of 1:100.