

# PKD2L2 Antibody



PACO41754

---

## Product Information

**Size:**

50ug

**Reactivity:**

Human

**Source:**

Rabbit

**Isotype:**

IgG

**Applications:**

ELISA, IHC, IF

**Recommended dilutions:**

ELISA:1:2000-1:10000, IHC:1:20-1:200,  
IF:1:50-1:200

**Protein Background:**

May function as a subunit of a cation channel and play a role in fertilization.

**Gene ID:**

PKD2L2

**Uniprot**

Q9NZM6

**Synonyms:**

Polycystic kidney disease 2-like 2 protein (Polycystin-2L2) (Polycystin-L2), PKD2L2

**Immunogen:**

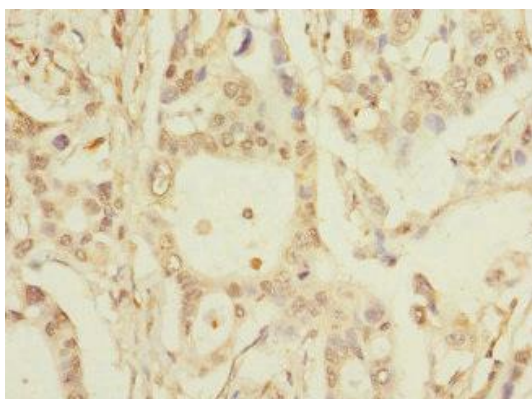
Recombinant Human Polycystic kidney disease 2-like 2 protein (390-523AA).

**Storage:**

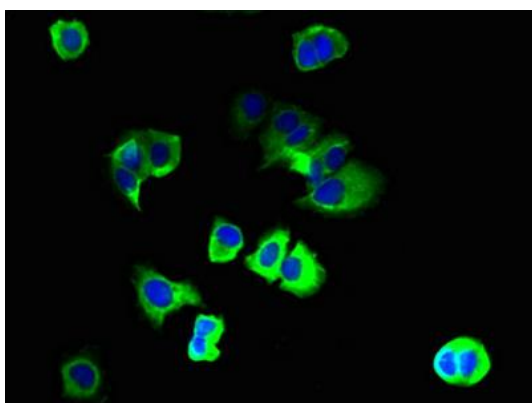
Preservative: 0.03% Proclin 300. Constituents: 50% Glycerol, 0.01M PBS, PH 7.4

## Product Images

---



Immunohistochemistry of paraffin-embedded human pancreatic cancer using PACO41754 at dilution of 1:100.



Immunofluorescent analysis of MCF-7 cells using PACO41754 at dilution of 1:100 and Alexa Fluor 488-conjugated AffiniPure Goat Anti-Rabbit IgG(H+L).