

# GID8 Antibody



PACO41714

---

## Product Information

**Size:**

50ug

**Reactivity:**

Human

**Source:**

Rabbit

**Isotype:**

IgG

**Applications:**

ELISA, IHC

**Recommended dilutions:**

ELISA:1:2000-1:10000, IHC:1:20-1:200

**Protein Background:**

cell junction, nucleoplasm.

**Gene ID:**

GID8

**Uniprot**

Q9NWU2

**Synonyms:**

Glucose-induced degradation protein 8 homolog (Two hybrid-associated protein 1 with RanBPM) (Twa1), GID8, C20orf11

**Immunogen:**

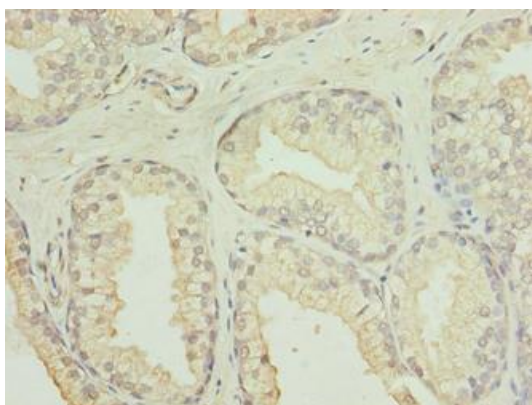
Recombinant Human Glucose-induced degradation protein 8 homolog protein (1-228AA).

**Storage:**

Preservative: 0.03% Proclin 300. Constituents: 50% Glycerol, 0.01M PBS, PH 7.4

## Product Images

---



Immunohistochemistry of paraffin-embedded human prostate cancer using PACO41714 at dilution of 1:100.