

PACO41682

Product Information

Size:

50ug

Reactivity:

Human, Mouse

Source:

Rabbit

Isotype:

IgG

Applications:

ELISA, WB

Recommended dilutions:

ELISA:1:2000-1:10000, WB:1:1000-1:5000

Protein Background:

Has a omega-amidase activity. The role of omega-amidase is to remove potentially toxic intermediates by converting alpha-ketoglutaramate and alpha-ketosuccinamate to biologically useful alpha-ketoglutarate and oxaloacetate, respectively.

Overexpression decreases the colony-forming capacity of cultured cells by arresting cells in the G2 phase of the cell cycle.

Gene ID:

NIT2

Uniprot

Q9NQR4

Synonyms:

Omega-amidase NIT2 (EC 3.5.1.3) (Nitrilase homolog 2), NIT2

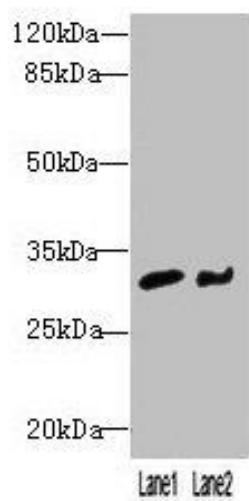
Immunogen:

Recombinant Human Omega-amidase NIT2 protein (1-276AA).

Storage:

Preservative: 0.03% Proclin 300. Constituents: 50% Glycerol, 0.01M PBS, PH 7.4

Product Images



Western blot. All lanes: NIT2 antibody at 3 μ g/ml. Lane 1: Mouse heart tissue. Lane 2: A549 whole cell lysate. Secondary. Goat polyclonal to rabbit IgG at 1/10000 dilution. Predicted band size: 31 kDa. Observed band size: 31 kDa.