

PACO41658

Product Information

Size:

50ug

Reactivity:

Human

Source:

Rabbit

Isotype:

IgG

Applications:

ELISA, IHC, IF

Recommended dilutions:

ELISA:1:2000-1:10000, IHC:1:20-1:200,
IF:1:50-1:200

Protein Background:

Riboflavin transporter. Riboflavin transport is Na(+)-independent but moderately pH-sensitive. Activity is strongly inhibited by riboflavin analogs, such as lumiflavin. Weakly inhibited by flavin adenine dinucleotide (FAD) and flavin mononucleotide (FMN). In case of infection by retroviruses, acts as a cell receptor to retroviral envelopes similar to the porcine endogenous retrovirus (PERV-A).

Gene ID:

SLC52A2

Uniprot

Q9HAB3

Synonyms:

Solute carrier family 52, riboflavin transporter, member 2 (Porcine endogenous retrovirus A receptor 1) (PERV-A receptor 1) (Protein GPR172A) (Riboflavin transporter 3) (hRFT3), SLC52A2, GPR172A PAR1 RFT3

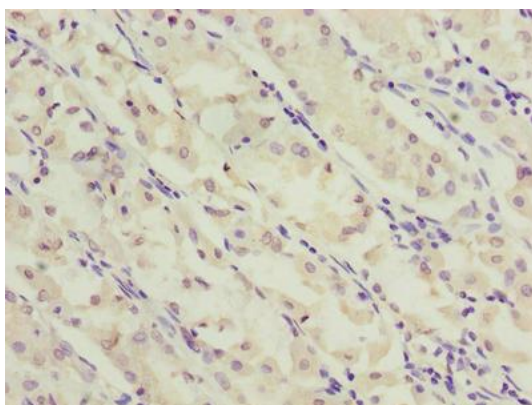
Immunogen:

Recombinant Human Solute carrier family 52, riboflavin transporter, member 2 protein (217-276AA).

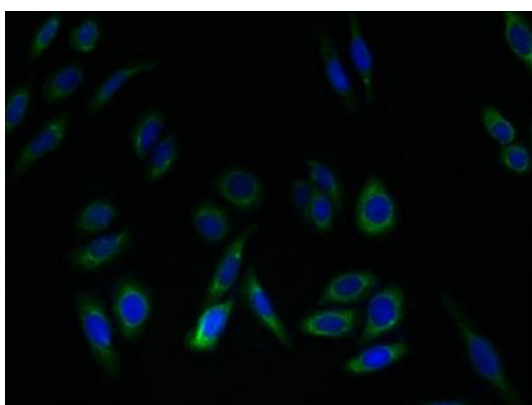
Storage:

Preservative: 0.03% Proclin 300. Constituents: 50% Glycerol, 0.01M PBS, PH 7.4

Product Images



Immunohistochemistry of paraffin-embedded human gastric cancer using PACO41658 at dilution of 1:100.



Immunofluorescent analysis of HepG2 cells using PACO41658 at dilution of 1:100 and Alexa Fluor 488-conjugated AffiniPure Goat Anti-Rabbit IgG(H+L).