

# LRRC40 Antibody



PACO41654

---

## Product Information

**Size:**

50ug

**Reactivity:**

Human

**Source:**

Rabbit

**Isotype:**

IgG

**Applications:**

ELISA, WB

**Recommended dilutions:**

ELISA:1:2000-1:10000, WB:1:500-1:5000

**Protein Background:**

**Gene ID:**

LRRC40

**Uniprot**

Q9H9A6

**Synonyms:**

Leucine-rich repeat-containing protein 40, LRRC40

**Immunogen:**

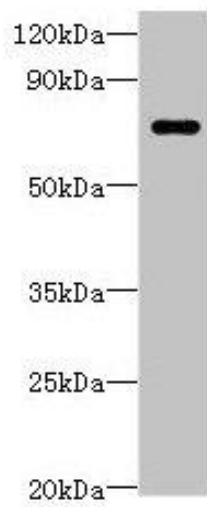
Recombinant Human Leucine-rich repeat-containing protein 40 protein (1-602AA).

**Storage:**

Preservative: 0.03% Proclin 300. Constituents: 50% Glycerol, 0.01M PBS, PH 7.4

## Product Images

---



Western blot. All lanes: LRRC40 antibody at 2 $\mu$ g/ml + 293T whole cell lysate. Secondary. Goat polyclonal to rabbit IgG at 1/10000 dilution. Predicted band size: 69 kDa. Observed band size: 69 kDa.