

# CXorf56 Antibody



PACO41638

---

## Product Information

**Size:**

50ug

**Reactivity:**

Human

**Source:**

Rabbit

**Isotype:**

IgG

**Applications:**

ELISA, IHC

**Recommended dilutions:**

ELISA:1:2000-1:10000, IHC:1:20-1:200

**Protein Background:**

**Gene ID:**

CXorf56

**Uniprot**

Q9H5V9

**Synonyms:**

UPF0428 protein CXorf56, CXorf56

**Immunogen:**

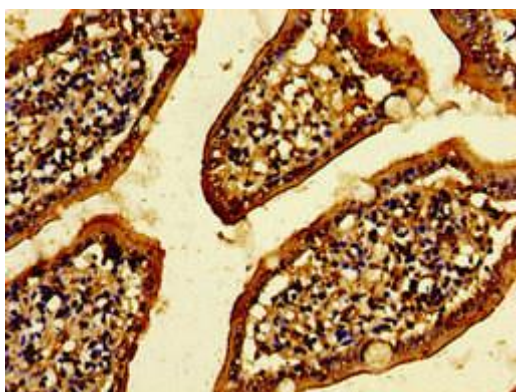
Recombinant Human UPF0428 protein CXorf56 protein (1-222AA).

**Storage:**

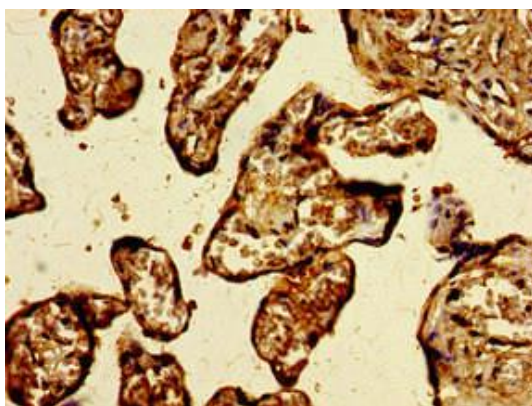
Preservative: 0.03% Proclin 300. Constituents: 50% Glycerol, 0.01M PBS, PH 7.4

## Product Images

---



Immunohistochemistry of paraffin-embedded human small intestine tissue using PACO41638 at dilution of 1:100.



Immunohistochemistry of paraffin-embedded human placenta tissue using PACO41638 at dilution of 1:100.