

# RABEP2 Antibody



PACO41634

---

## Product Information

**Size:**

50ug

**Reactivity:**

Human

**Source:**

Rabbit

**Isotype:**

IgG

**Applications:**

ELISA, IHC

**Recommended dilutions:**

ELISA:1:2000-1:10000, IHC:1:20-1:200

**Protein Background:**

Plays a role in membrane trafficking and in homotypic early endosome fusion.

**Gene ID:**

RABEP2

**Uniprot**

Q9H5N1

**Synonyms:**

Rab GTPase-binding effector protein 2 (Rabaptin-5beta), RABEP2, RABPT5B

**Immunogen:**

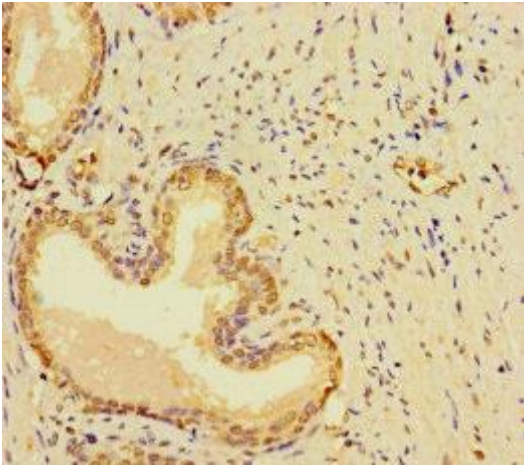
Recombinant Human Rab GTPase-binding effector protein 2 protein (301-533AA).

**Storage:**

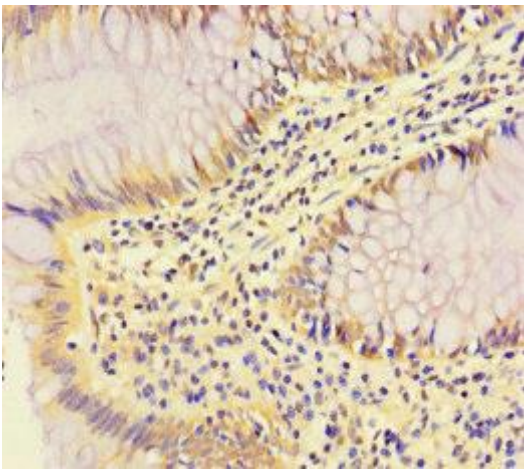
Preservative: 0.03% Proclin 300. Constituents: 50% Glycerol, 0.01M PBS, PH 7.4

## Product Images

---



Immunohistochemistry of paraffin-embedded human prostate cancer using PACO41634 at dilution of 1:100.



Immunohistochemistry of paraffin-embedded human colon cancer using PACO41634 at dilution of 1:100.