

LRRN3 Antibody



PACO41618

Product Information

Size:

50ug

Reactivity:

Human, Mouse

Source:

Rabbit

Isotype:

IgG

Applications:

ELISA, WB, IHC, IF

Recommended dilutions:

ELISA:1:2000-1:10000, WB:1:500-1:2000,
IHC:1:20-1:200, IF:1:50-1:200

Protein Background:

Gene ID:

LRRN3

Uniprot

Q9H3W5

Synonyms:

Leucine-rich repeat neuronal protein 3 (Neuronal leucine-rich repeat protein 3) (NLRR-3), LRRN3

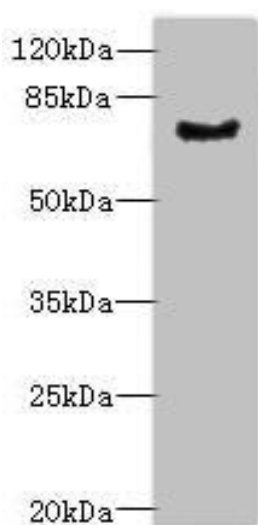
Immunogen:

Recombinant Human Leucine-rich repeat neuronal protein 3 protein (201-500AA).

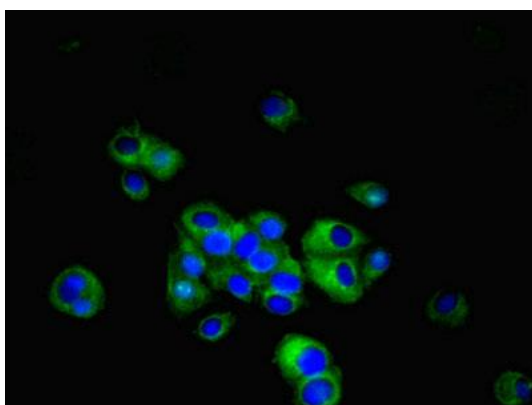
Storage:

Preservative: 0.03% Proclin 300. Constituents: 50% Glycerol, 0.01M PBS, PH 7.4

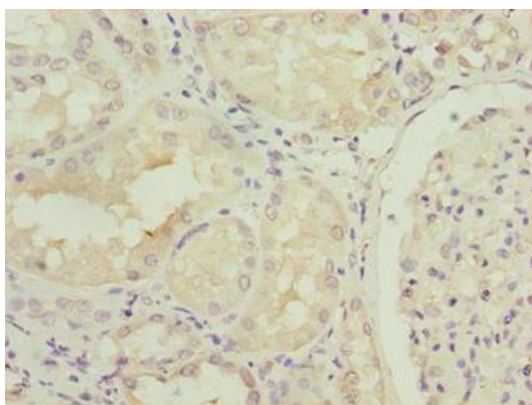
Product Images



Western blot. All lanes: LRRN3 antibody at 0.5 μ g/ml + Mouse liver tissue. Secondary. Goat polyclonal to rabbit IgG at 1/10000 dilution. Predicted band size: 79 kDa. Observed band size: 79 kDa.



Immunofluorescent analysis of MCF-7 cells using PACO41618 at dilution of 1:100 and Alexa Fluor 488-conjugated AffiniPure Goat Anti-Rabbit IgG(H+L).



Immunohistochemistry of paraffin-embedded human kidney tissue using PACO41618 at dilution of 1:100.