

CCDC113 Antibody



PACO41594

Product Information

Size:

50ug

Reactivity:

Human

Source:

Rabbit

Isotype:

IgG

Applications:

ELISA, IHC

Recommended dilutions:

ELISA:1:2000-1:10000, IHC:1:20-1:200

Protein Background:

Component of centriolar satellites contributing to primary cilium formation.

Gene ID:

CCDC113

Uniprot

Q9H0I3

Synonyms:

Coiled-coil domain-containing protein 113, CCDC113

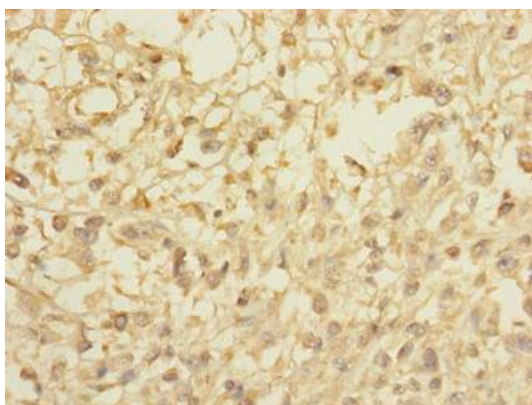
Immunogen:

Recombinant Human Coiled-coil domain-containing protein 113 protein (1-200AA).

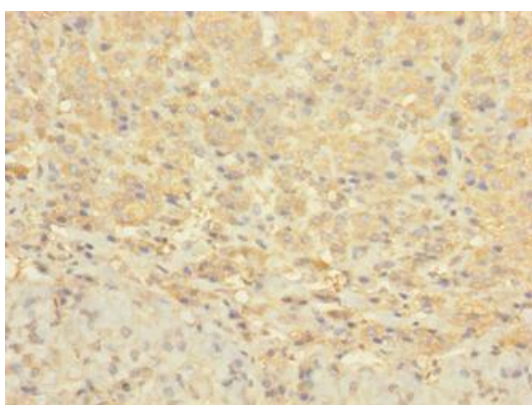
Storage:

Preservative: 0.03% Proclin 300. Constituents: 50% Glycerol, 0.01M PBS, PH 7.4

Product Images



Immunohistochemistry of paraffin-embedded human melanoma using PACO41594 at dilution of 1:100.



Immunohistochemistry of paraffin-embedded human adrenal gland tissue using PACO41594 at dilution of 1:100.