

PACO41582

Product Information

Size:

50ug

Reactivity:

Human, Mouse

Source:

Rabbit

Isotype:

IgG

Applications:

ELISA, WB, IHC

Recommended dilutions:

ELISA:1:2000-1:10000, WB:1:1000-1:5000,
IHC:1:20-1:200

Protein Background:

Transcriptional repressor which acts as a negative-feedback regulator of CLOCK-ARNTL/BMAL1 transcriptional activity in the circadian-clock mechanism. Stimulates ARNTL/BMAL1-dependent phosphorylation of CLOCK.

Gene ID:

CIPC

Uniprot

Q9C0C6

Synonyms:

CLOCK-interacting pacemaker (CLOCK-interacting circadian protein), CIPC, KIAA1737

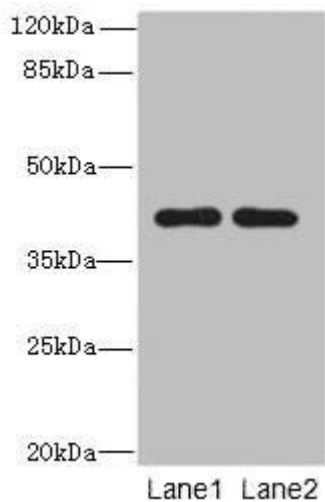
Immunogen:

Recombinant Human CLOCK-interacting pacemaker protein (1-399AA).

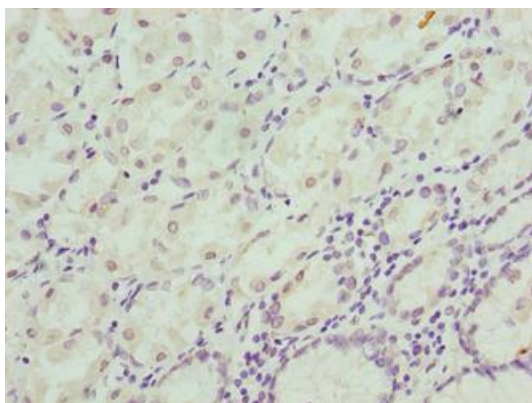
Storage:

Preservative: 0.03% Proclin 300. Constituents: 50% Glycerol, 0.01M PBS, PH 7.4

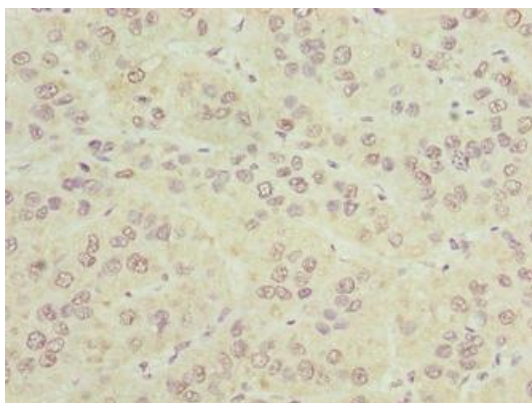
Product Images



Western blot. All lanes: CIPC antibody at 6 μ g/ml. Lane 1: A431 whole cell lysate. Lane 2: NIH/3T3 whole cell lysate. Secondary. Goat polyclonal to rabbit IgG at 1/10000 dilution. Predicted band size: 43 kDa. Observed band size: 43 kDa.



Immunohistochemistry of paraffin-embedded human stomach tissue using PACO41582 at dilution of 1:100.



Immunohistochemistry of paraffin-embedded human liver cancer using PACO41582 at dilution of 1:100.