

TUBB6 Antibody



PACO41530

Product Information

Size:

50ug

Reactivity:

Human

Source:

Rabbit

Isotype:

IgG

Applications:

ELISA, WB, IHC

Recommended dilutions:

ELISA:1:2000-1:10000, WB:1:500-1:2000,
IHC:1:20-1:200

Protein Background:

Tubulin is the major constituent of microtubules. It binds two moles of GTP, one at an exchangeable site on the beta chain and one at a non-exchangeable site on the alpha chain.

Gene ID:

TUBB6

Uniprot

Q9BUF5

Synonyms:

Tubulin beta-6 chain (Tubulin beta class V), TUBB6

Immunogen:

Recombinant Human Tubulin beta-6 chain protein (1-446AA).

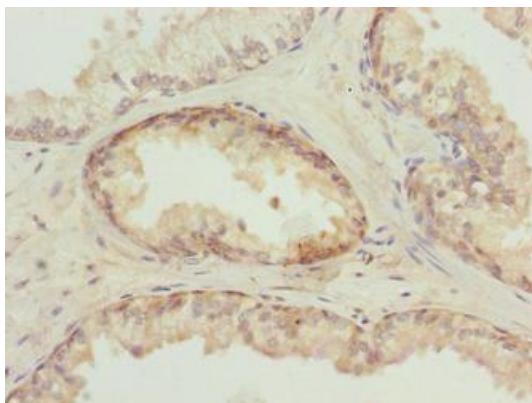
Storage:

Preservative: 0.03% Proclin 300. Constituents: 50% Glycerol, 0.01M PBS, PH 7.4

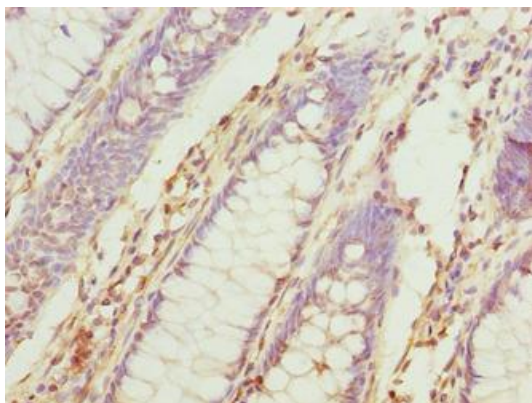
Product Images



Western blot. All lanes: TUBB6 antibody at 4 μ g/ml. Lane 1: HeLa whole cell lysate. Lane 2: MDA-MB-231 whole cell lysate. Secondary. Goat polyclonal to rabbit IgG at 1/10000 dilution. Predicted band size: 50 kDa. Observed band size: 50 kDa.



Immunohistochemistry of paraffin-embedded human prostate cancer using PACO41530 at dilution of 1:100.



Immunohistochemistry of paraffin-embedded human colon cancer using PACO41530 at dilution of 1:100.