

## Product Information

**Size:**

50ug

**Reactivity:**

Human

**Source:**

Rabbit

**Isotype:**

IgG

**Applications:**

ELISA, WB, IHC

**Recommended dilutions:**

ELISA:1:2000-1:10000, WB:1:500-1:2000,  
IHC:1:20-1:200

**Protein Background:**

Metal-dependent single-stranded DNA (ssDNA) exonuclease involved in mitochondrial genome maintenance. Has preference for 5'-3' exonuclease activity but is also capable of endonuclease activity on linear substrates. Necessary for maintenance of proper 7S DNA levels. Probably involved in mitochondrial DNA (mtDNA) repair, possibly via the processing of displaced DNA containing Okazaki fragments during RNA-primed DNA synthesis on the lagging strand or via processing of DNA flaps during long-patch base excision repair. Specifically binds 5-hydroxymethylcytosine (5hmC)-containing DNA in stem cells.

**Gene ID:**

MGME1

**Uniprot**

Q9BQP7

**Synonyms:**

Mitochondrial genome maintenance exonuclease 1 (EC 3.1. -. -), MGME1, C20orf72  
DDK1

**Immunogen:**

Recombinant Human Mitochondrial genome maintenance exonuclease 1 protein (81-260AA).

**Storage:**

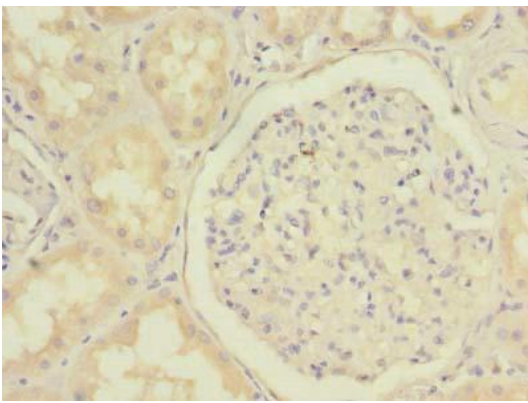
Preservative: 0.03% Proclin 300. Constituents: 50% Glycerol, 0.01M PBS, PH 7.4

## Product Images

---



Western blot. All lanes: MGME1 antibody at 1 $\mu$ g/ml. Lane 1: Jurkat whole cell lysate. Lane 2: 293T whole cell lysate. Secondary. Goat polyclonal to rabbit IgG at 1/10000 dilution. Predicted band size: 39 kDa. Observed band size: 39 kDa.



Immunohistochemistry of paraffin-embedded human kidney tissue using PACO41522 at dilution of 1:100.