

# ARMCX1 Antibody



PACO41494

---

## Product Information

**Size:**

50ug

**Reactivity:**

Human

**Source:**

Rabbit

**Isotype:**

IgG

**Applications:**

ELISA, IHC

**Recommended dilutions:**

ELISA:1:2000-1:10000, IHC:1:20-1:200

**Protein Background:****Gene ID:**

ARMCX1

**Uniprot**

Q9P291

**Synonyms:**

Armadillo repeat-containing X-linked protein 1 (ARM protein lost in epithelial cancers on chromosome X 1) (Protein ALEX1), ARMCX1, ALEX1

**Immunogen:**

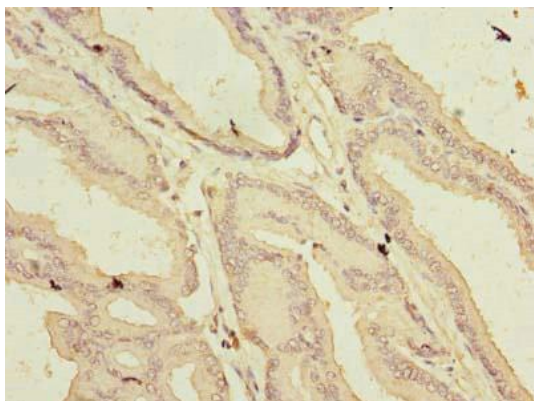
Recombinant Human Armadillo repeat-containing X-linked protein 1 protein (29-300AA).

**Storage:**

Preservative: 0.03% Proclin 300. Constituents: 50% Glycerol, 0.01M PBS, PH 7.4

## Product Images

---



Immunohistochemistry of paraffin-embedded human prostate cancer using PACO41494 at dilution of 1:100.