

CA10 Antibody



PACO41410

Product Information

Size:

50ug

Reactivity:

Human, Mouse

Source:

Rabbit

Isotype:

IgG

Applications:

ELISA, WB

Recommended dilutions:

ELISA:1:2000-1:10000, WB:1:500-1:2000

Protein Background:

Does not have a catalytic activity.

Gene ID:

CA10

Uniprot

Q9NS85

Synonyms:

Carbonic anhydrase-related protein 10 (Carbonic anhydrase-related protein X) (CA-RP X) (CARP X) (Cerebral protein 15), CA10

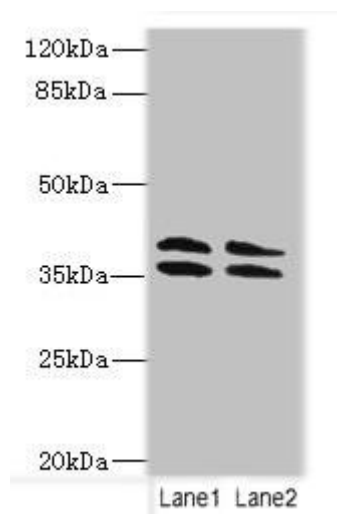
Immunogen:

Recombinant Human CA10 protein (61-320AA).

Storage:

Preservative: 0.03% Proclin 300. Constituents: 50% Glycerol, 0.01M PBS, PH 7.4

Product Images



Western blot. All lanes: CA10 antibody at 4 μ g/ml. Lane 1: HL60 whole cell lysate. Lane 2: Mouse brain tissue. Secondary. Goat polyclonal to rabbit IgG at 1/10000 dilution. Predicted band size: 38, 30 kDa. Observed band size: 38 kDa.