

# FAM114A2 Antibody



PACO41402

---

## Product Information

**Size:**

50ug

**Reactivity:**

Human, Mouse

**Source:**

Rabbit

**Isotype:**

IgG

**Applications:**

ELISA, WB, IHC

**Recommended dilutions:**

ELISA:1:2000-1:10000, WB:1:1000-1:5000,  
IHC:1:20-1:200

**Protein Background:****Gene ID:**

FAM114A2

**Uniprot**

Q9NRY5

**Synonyms:**

Protein FAM114A2, FAM114A2, C5orf3

**Immunogen:**

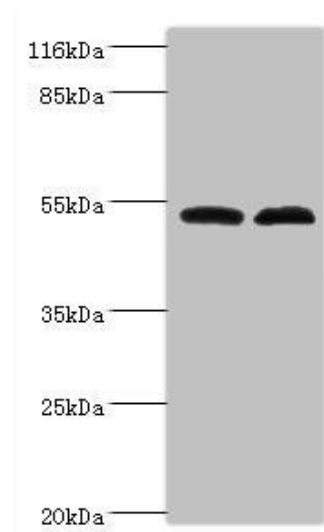
Recombinant Human Protein FAM114A2 protein (1-505AA).

**Storage:**

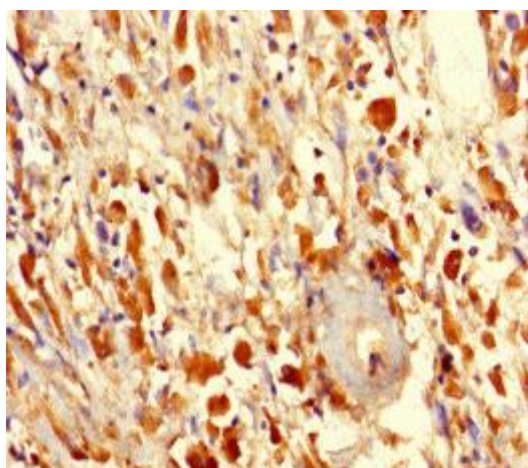
Preservative: 0.03% Proclin 300. Constituents: 50% Glycerol, 0.01M PBS, PH 7.4

## Product Images

---



Western blot. All lanes: Protein FAM114A2 antibody at 2 $\mu$ g/ml. Lane 1: Mouse kidney tissue. Lane 2: U251 whole cell lysate. Secondary: Goat polyclonal to rabbit IgG at 1/10000 dilution. Predicted band size: 55 kDa. Observed band size: 55 kDa.



Immunohistochemistry of paraffin-embedded human melanoma using PACO41402 at dilution of 1:100.