

# EXOSC5 Antibody



PACO41390

---

## Product Information

**Size:**

50ug

**Reactivity:**

Human

**Source:**

Rabbit

**Isotype:**

IgG

**Applications:**

ELISA, WB, IHC

**Recommended dilutions:**

ELISA:1:2000-1:10000, WB:1:500-1:2000,  
IHC:1:20-1:200

**Protein Background:**

**Gene ID:**

EXOSC5

**Uniprot**

Q9NQT4

**Synonyms:**

Exosome complex component RRP46 (Chronic myelogenous leukemia tumor antigen 28) (Exosome component 5) (Ribosomal RNA-processing protein 46) (p12B), EXOSC5, CML28 RRP46

**Immunogen:**

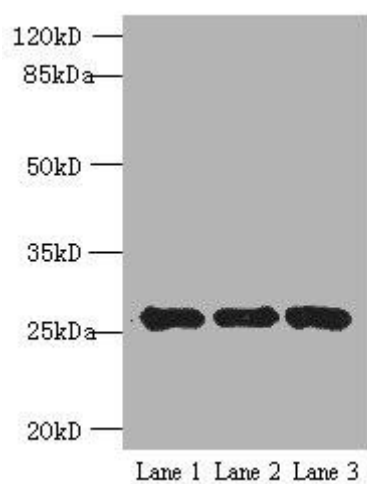
Recombinant Human Exosome complex component RRP46 protein (1-235AA).

**Storage:**

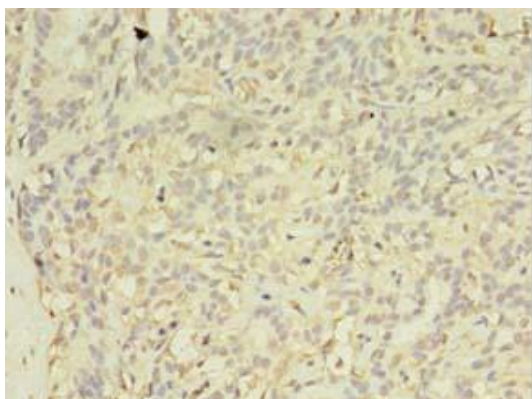
Preservative: 0.03% Proclin 300. Constituents: 50% Glycerol, 0.01M PBS, PH 7.4

## Product Images

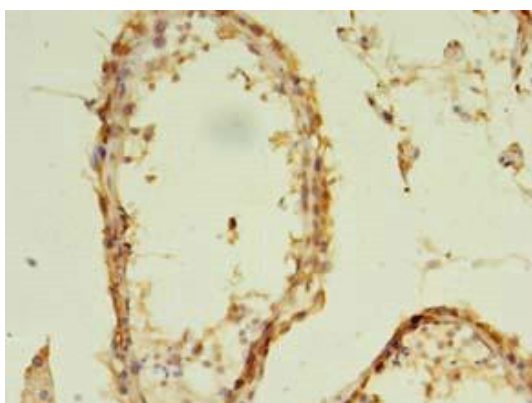
---



Western blot. All lanes: EXOSC5 antibody at 5 $\mu$ g/ml. Lane 1: K562 whole cell lysate. Lane 2: 293T whole cell lysate. Lane 3: Hela whole cell lysate. Secondary. Goat polyclonal to rabbit IgG at 1/10000 dilution. Predicted band size: 25 kDa. Observed band size: 25 kDa.



Immunohistochemistry of paraffin-embedded human breast cancer using PACO41390 at dilution of 1:100.



Immunohistochemistry of paraffin-embedded human testis tissue using PACO41390 at dilution of 1:100.