

PIH1D3 Antibody



PACO41386

Product Information

Size:

50ug

Reactivity:

Human

Source:

Rabbit

Isotype:

IgG

Applications:

ELISA, IHC, IF

Recommended dilutions:

ELISA:1:2000-1:10000, IHC:1:20-1:200,
IF:1:50-1:200

Protein Background:

Plays a role in cytoplasmic pre-assembly of axonemal dynein.

Gene ID:

PIH1D3

Uniprot

Q9NQM4

Synonyms:

Protein PIH1D3 (PIH1 domain-containing protein 3) (Sarcoma antigen NY-SAR-97),
PIH1D3, CXorf41

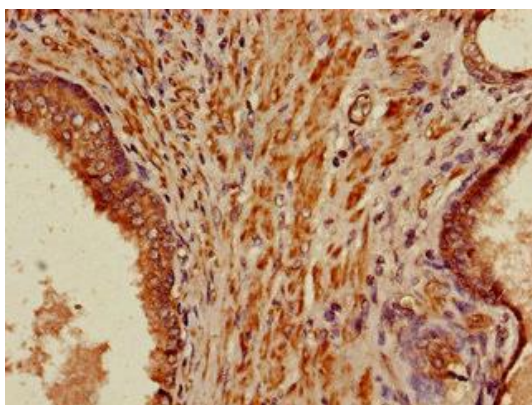
Immunogen:

Recombinant Human Protein PIH1D3 protein (1-214AA).

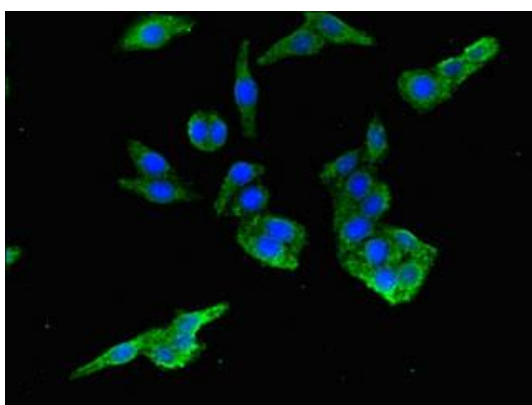
Storage:

Preservative: 0.03% Proclin 300. Constituents: 50% Glycerol, 0.01M PBS, PH 7.4

Product Images



Immunohistochemistry of paraffin-embedded human prostate cancer using PACO41386 at dilution of 1:100.



Immunofluorescent analysis of HepG2 cells using PACO41386 at dilution of 1:100 and Alexa Fluor 488-conjugated AffiniPure Goat Anti-Rabbit IgG(H+L).