

VAT1L Antibody



PACO41362

Product Information

Size:

50ug

Reactivity:

Human

Source:

Rabbit

Isotype:

IgG

Applications:

ELISA, WB, IHC

Recommended dilutions:

ELISA:1:2000-1:10000, WB:1:500-1:2000,
IHC:1:20-1:200

Protein Background:**Gene ID:**

VAT1L

Uniprot

Q9HCJ6

Synonyms:

Synaptic vesicle membrane protein VAT-1 homolog-like (EC 1), VAT1L, KIAA1576

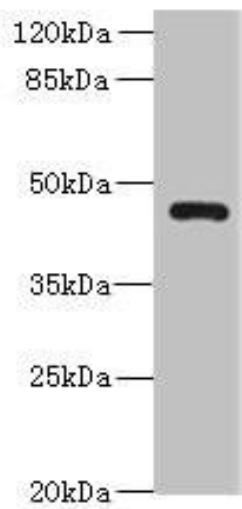
Immunogen:

Recombinant Human Synaptic vesicle membrane protein VAT-1 homolog-like protein (1-419AA).

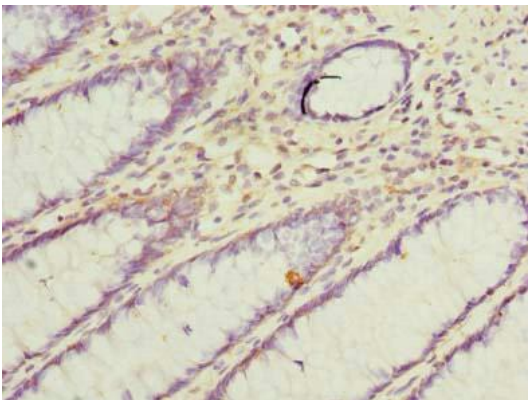
Storage:

Preservative: 0.03% Proclin 300. Constituents: 50% Glycerol, 0.01M PBS, PH 7.4

Product Images



Western blot. All lanes: VAT1L antibody at 0.3 μ g/ml + U87 whole cell lysate. Secondary. Goat polyclonal to rabbit IgG at 1/10000 dilution. Predicted band size: 46 kDa. Observed band size: 46 kDa.



Immunohistochemistry of paraffin-embedded human colon cancer using PACO41362 at dilution of 1:100.