

REEP4 Antibody



PACO41338

Product Information

Size:

50ug

Reactivity:

Human

Source:

Rabbit

Isotype:

IgG

Applications:

ELISA, WB, IHC, IF

Recommended dilutions:

ELISA:1:2000-1:10000, WB:1:500-1:2000,
IHC:1:20-1:200, IF:1:50-1:200

Protein Background:

Microtubule-binding protein required to ensure proper cell division and nuclear envelope reassembly by sequestering the endoplasmic reticulum away from chromosomes during mitosis. Probably acts by clearing the endoplasmic reticulum membrane from metaphase chromosomes.

Gene ID:

REEP4

Uniprot

Q9H6H4

Synonyms:

Receptor expression-enhancing protein 4, REEP4, C8orf20

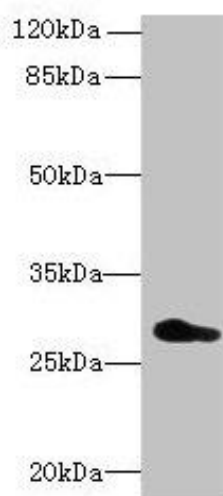
Immunogen:

Recombinant Human Receptor expression-enhancing protein 4 protein (78-257AA).

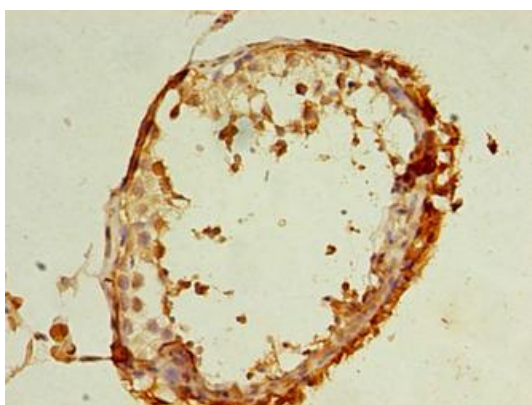
Storage:

Preservative: 0.03% Proclin 300. Constituents: 50% Glycerol, 0.01M PBS, PH 7.4

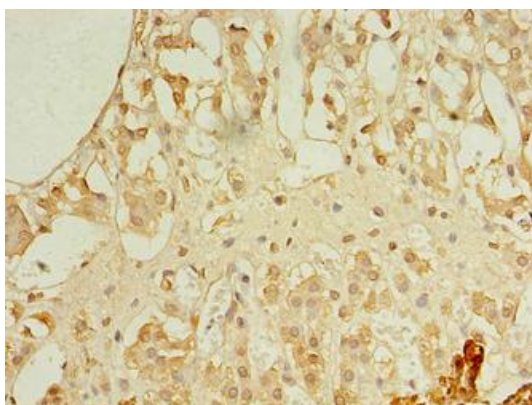
Product Images



Western blot. All lanes: REEP4 antibody at 0.7 μ g/ml + U251 whole cell lysate. Secondary. Goat polyclonal to rabbit IgG at 1/10000 dilution. Predicted band size: 30, 20 kDa. Observed band size: 30 kDa.



Immunohistochemistry of paraffin-embedded human testis tissue using PACO41338 at dilution of 1:100.



Immunohistochemistry of paraffin-embedded human adrenal gland tissue using PACO41338 at dilution of 1:100.