

RAB6C Antibody



PACO41314

Product Information

Size:

50ug

Reactivity:

Human

Source:

Rabbit

Isotype:

IgG

Applications:

ELISA, IHC

Recommended dilutions:

ELISA:1:2000-1:10000, IHC:1:20-1:200

Protein Background:

May be involved in the regulation of centrosome duplication and cell cycle progression.

Gene ID:

RAB6C

Uniprot

Q9H0N0

Synonyms:

Ras-related protein Rab-6C (Rab6-like protein WTH3), RAB6C, WTH3

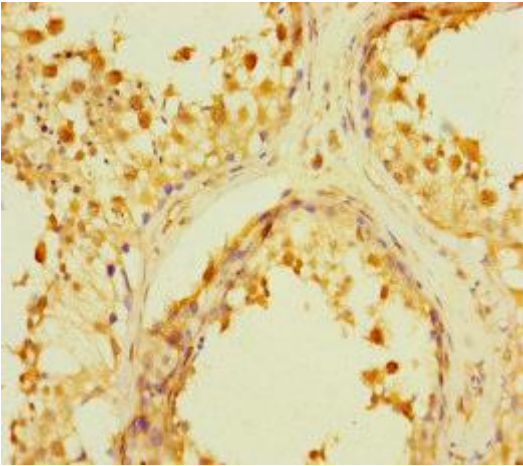
Immunogen:

Recombinant Human Ras-related protein Rab-6C protein (1-254AA).

Storage:

Preservative: 0.03% Proclin 300. Constituents: 50% Glycerol, 0.01M PBS, PH 7.4

Product Images



Immunohistochemistry of paraffin-embedded human testis tissue using PACO41314 at dilution of 1:100.