

MS4A7 Antibody



PACO41302

Product Information

Size:

50ug

Reactivity:

Human

Source:

Rabbit

Isotype:

IgG

Applications:

ELISA, IHC, IF

Recommended dilutions:

ELISA:1:2000-1:10000, IHC:1:20-1:200,
IF:1:50-1:200

Protein Background:

May be involved in signal transduction as a component of a multimeric receptor complex.

Gene ID:

MS4A7

Uniprot

Q9GZW8

Synonyms:

Membrane-spanning 4-domains subfamily A member 7 (CD20 antigen-like 4) (CD20/FC-epsilon-RI-beta family member 4) (Four-span transmembrane protein 2), MS4A7, 4SPAN2 CD20L4 CFFM4

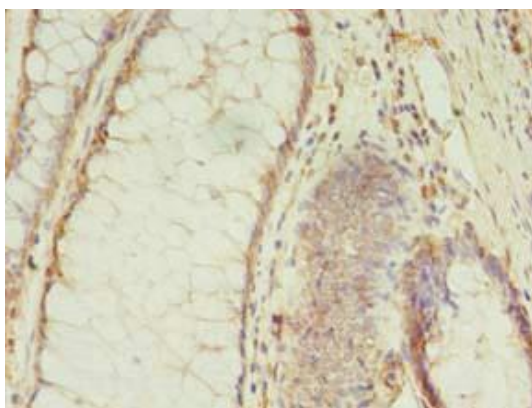
Immunogen:

Recombinant Human Membrane-spanning 4-domains subfamily A member 7 protein (1-47AA).

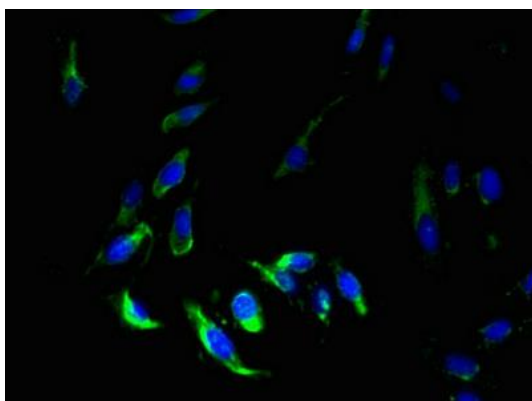
Storage:

Preservative: 0.03% Proclin 300. Constituents: 50% Glycerol, 0.01M PBS, PH 7.4

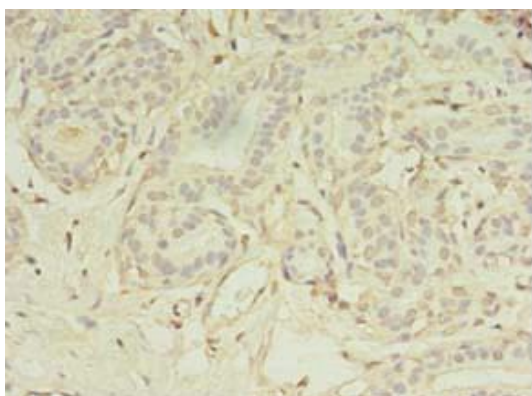
Product Images



Immunohistochemistry of paraffin-embedded human colon cancer using PACO41302 at dilution of 1:100.



Immunofluorescent analysis of HeLa cells using PACO41302 at dilution of 1:100 and Alexa Fluor 488-conjugated AffiniPure Goat Anti-Rabbit IgG(H+L).



Immunohistochemistry of paraffin-embedded human breast cancer using PACO41302 at dilution of 1:100.