

# OR2H1 Antibody



PACO41290

---

## Product Information

**Size:**

50ug

**Reactivity:**

Human, Mouse

**Source:**

Rabbit

**Isotype:**

IgG

**Applications:**

ELISA, WB, IHC, IF

**Recommended dilutions:**

ELISA:1:2000-1:10000, WB:1:500-1:2000,  
IHC:1:20-1:200, IF:1:50-1:200

**Protein Background:**

Odorant receptor.

**Gene ID:**

OR2H1

**Uniprot**

Q9GZK4

**Synonyms:**

Olfactory receptor 2H1 (Hs6M1-16) (OLFR42A-9004.14/9026.2) (Olfactory receptor 2H6) (Olfactory receptor 2H8) (Olfactory receptor 6-2) (OR6-2) (Olfactory receptor OR6-32), OR2H1, OR2H6 OR2H8

**Immunogen:**

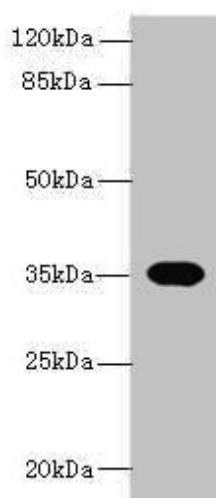
Recombinant Human Olfactory receptor 2H1 protein (157-193AA).

**Storage:**

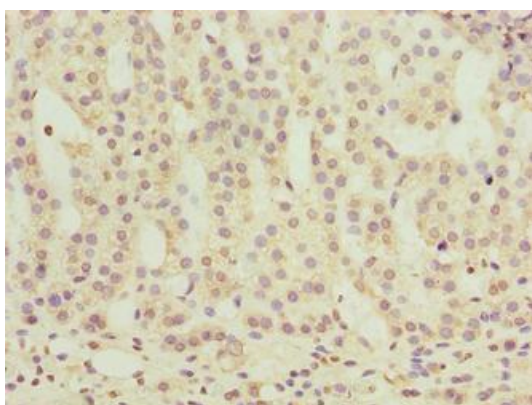
Preservative: 0.03% Proclin 300. Constituents: 50% Glycerol, 0.01M PBS, PH 7.4

## Product Images

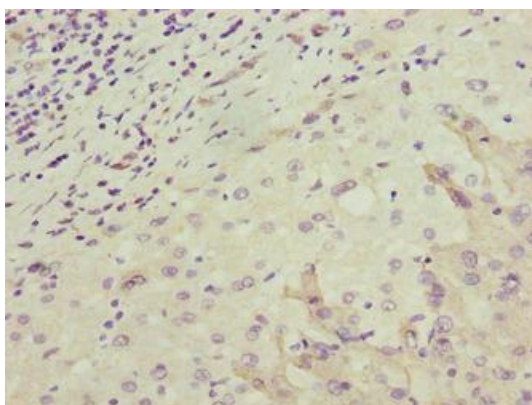
---



Western blot. All lanes: OR2H1 antibody at 0.5 $\mu$ g/ml + Mouse liver tissue. Secondary. Goat polyclonal to rabbit IgG at 1/10000 dilution. Predicted band size: 35 kDa. Observed band size: 35 kDa.



Immunohistochemistry of paraffin-embedded human adrenal gland tissue using PACO41290 at dilution of 1:100.



Immunohistochemistry of paraffin-embedded human liver cancer using PACO41290 at dilution of 1:100.