

MRPL1 Antibody



PACO41274

Product Information

Size:

50ug

Reactivity:

Human

Source:

Rabbit

Isotype:

IgG

Applications:

ELISA, WB, IHC

Recommended dilutions:

ELISA:1:2000-1:10000, WB:1:1000-1:5000,
IHC:1:20-1:200

Protein Background:**Gene ID:**

MRPL1

Uniprot

Q9BYD6

Synonyms:

39S ribosomal protein L1, mitochondrial (L1mt) (MRP-L1) (Mitochondrial large ribosomal subunit protein uL1m), MRPL1

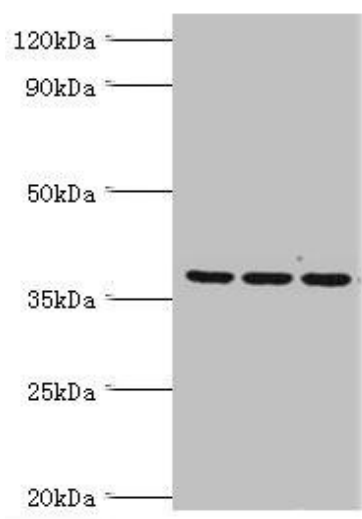
Immunogen:

Recombinant Human 39S ribosomal protein L1, mitochondrial protein (51-324AA).

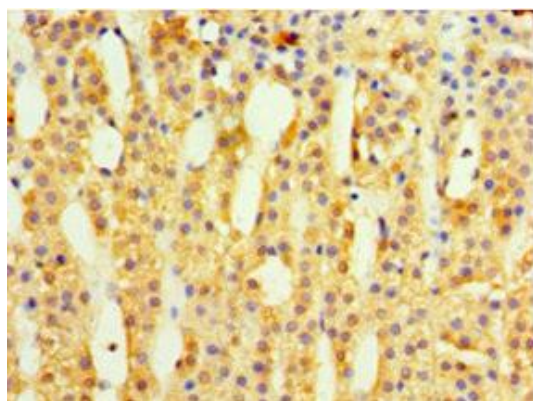
Storage:

Preservative: 0.03% Proclin 300. Constituents: 50% Glycerol, 0.01M PBS, PH 7.4

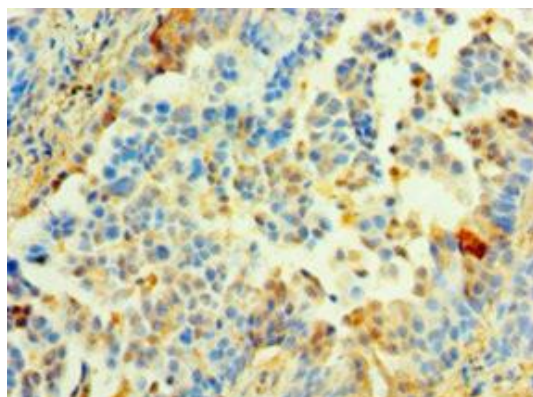
Product Images



Western blot. All lanes: 39S ribosomal protein L1, mitochondrial antibody at 2 μ g/ml. Lane 1: Hela whole cell lysate. Lane 2: K562 whole cell lysate. Lane 3: HepG2 whole cell lysate. Secondary. Goat polyclonal to rabbit IgG at 1/10000 dilution. Predicted band size: 39 kDa. Observed band size: 39 kDa.



Immunohistochemistry of paraffin-embedded human adrenal gland tissue using PACO41274 at dilution of 1:100.



Immunohistochemistry of paraffin-embedded human lung cancer using PACO41274 at dilution of 1:100.