

CDADC1 Antibody



PACO41266

Product Information

Size:

50ug

Reactivity:

Human

Source:

Rabbit

Isotype:

IgG

Applications:

ELISA, IHC

Recommended dilutions:

ELISA:1:2000-1:10000, IHC:1:20-1:200

Protein Background:

May play an important role in testicular development and spermatogenesis.

Gene ID:

CDADC1

Uniprot

Q9BWW3

Synonyms:

Cytidine and dCMP deaminase domain-containing protein 1 (Testis development protein NYD-SP15), CDADC1

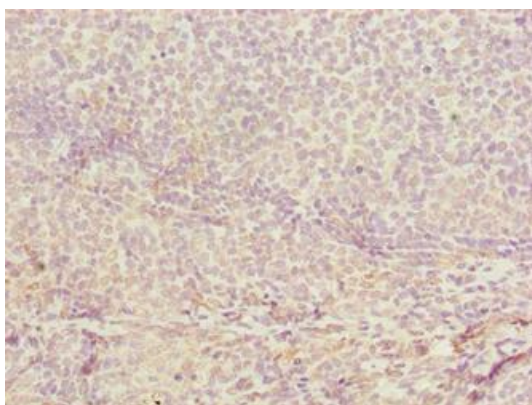
Immunogen:

Recombinant Human Cytidine and dCMP deaminase domain-containing protein 1 protein (1-99AA).

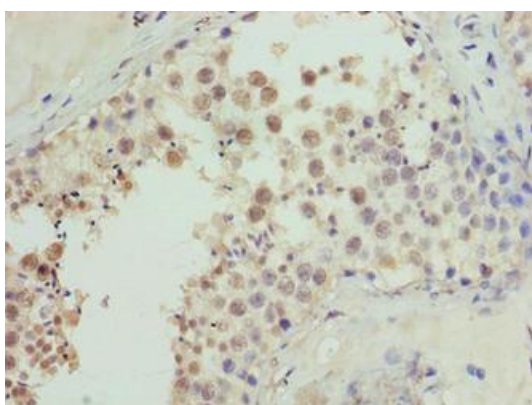
Storage:

Preservative: 0.03% Proclin 300. Constituents: 50% Glycerol, 0.01M PBS, PH 7.4

Product Images



Immunohistochemistry of paraffin-embedded human tonsil tissue using PACO41266 at dilution of 1:100.



Immunohistochemistry of paraffin-embedded human testis tissue using PACO41266 at dilution of 1:100.