

PACO41242

Product Information

Size:

50ug

Reactivity:

Human

Source:

Rabbit

Isotype:

IgG

Applications:

ELISA, IHC, IF

Recommended dilutions:

ELISA:1:2000-1:10000, IHC:1:20-1:200,
IF:1:50-1:500

Protein Background:

Tumor suppressor which has the ability to inhibit cell growth and be pro-apoptotic during cell stress. Inhibits cell growth in bladder and prostate cancer cells by a down-regulation of HSPB1 by inhibiting its phosphorylation. May act as a 'capping' or 'branching' protein for keratin filaments in the cell periphery. May regulate K8/K18 filament and desmosome organization mainly at the apical or peripheral regions of simple epithelial cells. Is a negative regulator of ciliogenesis.

Gene ID:

TCHP

Uniprot

Q9BT92

Synonyms:

Trichoplein keratin filament-binding protein (Protein TCHP) (Mitochondrial protein with oncogenic activity) (Mitostatin) (Tumor suppressor protein), TCHP

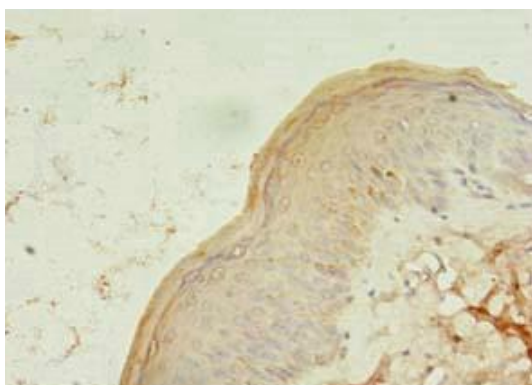
Immunogen:

Recombinant Human Trichoplein keratin filament-binding protein (1-498AA).

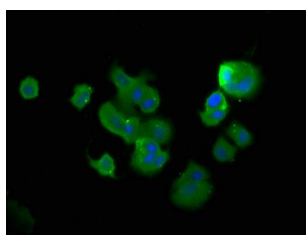
Storage:

Preservative: 0.03% Proclin 300. Constituents: 50% Glycerol, 0.01M PBS, PH 7.4

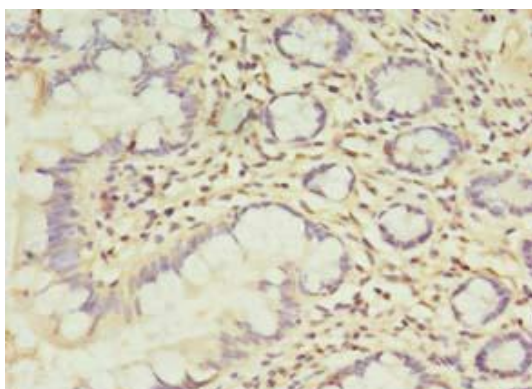
Product Images



Immunohistochemistry of paraffin-embedded human skin tissue using PACO41242 at dilution of 1:100.



Immunofluorescence staining of MCF-7 cells with PACO41242 at 1:400, counter-stained with DAPI. The cells were fixed in 4% formaldehyde, permeabilized using 0.2% Triton X-100 and blocked in 10% normal Goat Serum. The cells were then incubated with the antibody overnight at 4°C. The secondary antibody was Alexa Fluor 488-conjugated AffiniPure Goat Anti-Rabbit IgG(H+L).



Immunohistochemistry of paraffin-embedded human small intestine tissue using PACO41242 at dilution of 1:100.