

# CALML5 Antibody



PACO41214

---

## Product Information

**Size:**

50ug

**Reactivity:**

Human

**Source:**

Rabbit

**Isotype:**

IgG

**Applications:**

ELISA, WB, IHC

**Recommended dilutions:**

ELISA:1:2000-1:10000, WB:1:200-1:1000,  
IHC:1:20-1:200

**Protein Background:**

Binds calcium. May be involved in terminal differentiation of keratinocytes.

**Gene ID:**

CALML5

**Uniprot**

Q9NZT1

**Synonyms:**

Calmodulin-like protein 5 (Calmodulin-like skin protein), CALML5, CLSP

**Immunogen:**

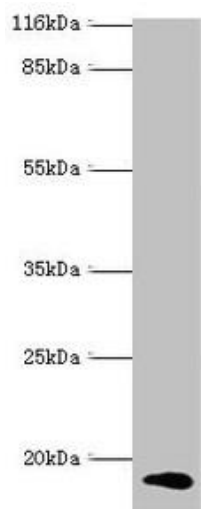
Recombinant Human Calmodulin-like protein 5 protein (2-146AA).

**Storage:**

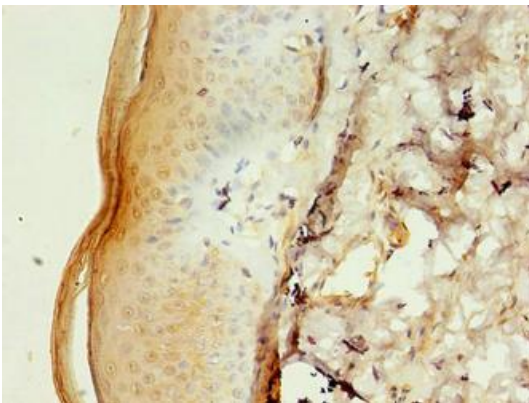
Preservative: 0.03% Proclin 300. Constituents: 50% Glycerol, 0.01M PBS, PH 7.4

## Product Images

---



Western blot. All lanes: CALML5 antibody at 2 $\mu$ g/ml + A431 whole cell lysate. Secondary. Goat polyclonal to rabbit IgG at 1/10000 dilution. Predicted band size: 16 kDa. Observed band size: 16 kDa.



Immunohistochemistry of paraffin-embedded human skin tissue using PACO41214 at dilution of 1:100.