

RAB6B Antibody



PACO41170

Product Information

Size:

50ug

Reactivity:

Human, Mouse

Source:

Rabbit

Isotype:

IgG

Applications:

ELISA, WB, IHC

Recommended dilutions:

ELISA:1:2000-1:10000, WB:1:500-1:2000,
IHC:1:20-1:200

Protein Background:

Seems to have a role in retrograde membrane traffic at the level of the Golgi complex. May function in retrograde transport in neuronal cells.

Gene ID:

RAB6B

Uniprot

Q9NRW1

Synonyms:

Ras-related protein Rab-6B, RAB6B

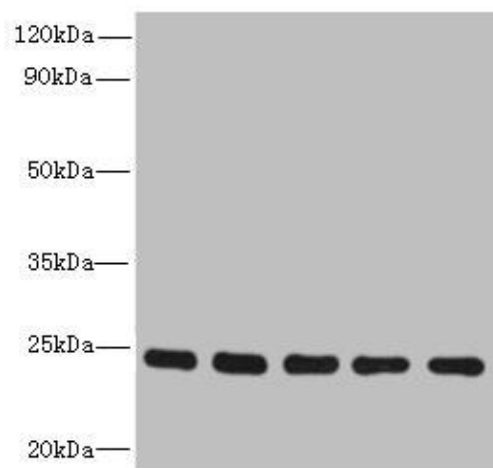
Immunogen:

Recombinant Human Ras-related protein Rab-6B protein (2-208AA).

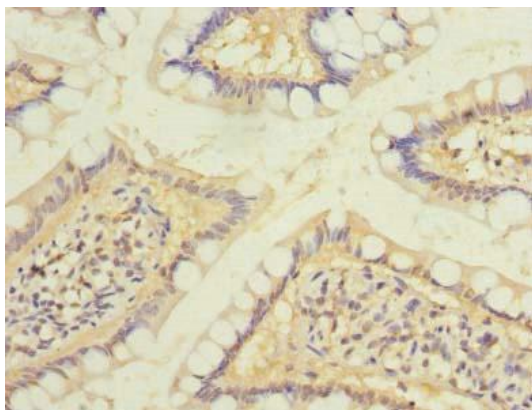
Storage:

Preservative: 0.03% Proclin 300. Constituents: 50% Glycerol, 0.01M PBS, PH 7.4

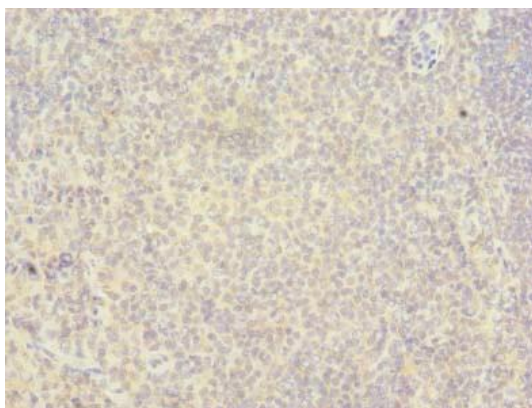
Product Images



Western blot. All lanes: RAB6B antibody at 5µg/ml. Lane 1: Mouse brain tissue. Lane 2: U251 whole cell lysate. Lane 3: MCF-7 whole cell lysate. Lane 4: A549 whole cell lysate. Lane 5: K562 whole cell lysate. Secondary: Goat polyclonal to rabbit IgG at 1/10000 dilution. Predicted band size: 24, 23 kDa. Observed band size: 24 kDa.



Immunohistochemistry of paraffin-embedded human small intestine tissue using PACO41170 at dilution of 1:100.



Immunohistochemistry of paraffin-embedded human tonsil tissue using PACO41170 at dilution of 1:100.