

CYTL1 Antibody



PACO41166

Product Information

Size:

50ug

Reactivity:

Human

Source:

Rabbit

Isotype:

IgG

Applications:

ELISA, IHC

Recommended dilutions:

ELISA:1:2000-1:10000, IHC:1:20-1:200

Protein Background:

extracellular space, receptor binding, signal transduction.

Gene ID:

CYTL1

Uniprot

Q9NRR1

Synonyms:

Cytokine-like protein 1 (Protein C17), CYTL1, C4orf4

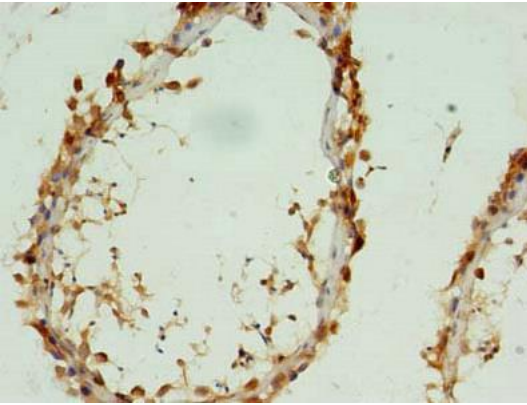
Immunogen:

Recombinant Human Cytokine-like protein 1 protein (24-136AA).

Storage:

Preservative: 0.03% Proclin 300. Constituents: 50% Glycerol, 0.01M PBS, PH 7.4

Product Images



Immunohistochemistry of paraffin-embedded human testis tissue using PACO41166 at dilution of 1:100.