

TUBG2 Antibody



PACO41162

Product Information

Size:

50ug

Reactivity:

Human, Mouse

Source:

Rabbit

Isotype:

IgG

Applications:

ELISA, WB, IHC

Recommended dilutions:

ELISA:1:2000-1:10000, WB:1:500-1:5000,
IHC:1:20-1:200

Protein Background:

Tubulin is the major constituent of microtubules. The gamma chain is found at microtubule organizing centers (MTOC) such as the spindle poles or the centrosome. Pericentriolar matrix component that regulates alpha/beta chain minus-end nucleation, centrosome duplication and spindle formation.

Gene ID:

TUBG2

Uniprot

Q9NRH3

Synonyms:

Tubulin gamma-2 chain (Gamma-2-tubulin), TUBG2

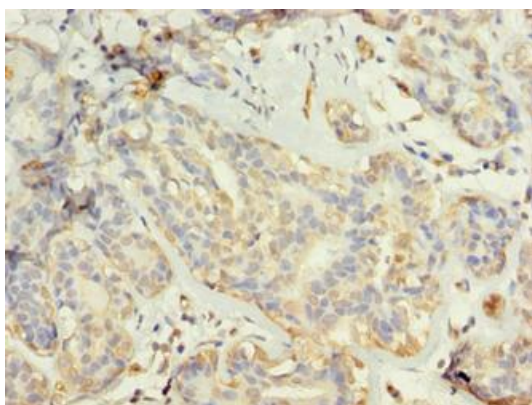
Immunogen:

Recombinant Human Tubulin gamma-2 chain protein (276-451AA).

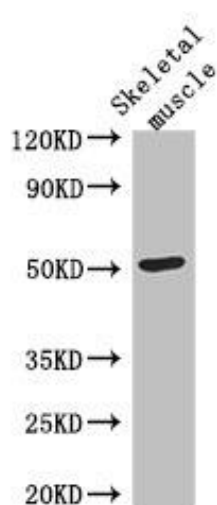
Storage:

Preservative: 0.03% Proclin 300. Constituents: 50% Glycerol, 0.01M PBS, PH 7.4

Product Images



Immunohistochemistry of paraffin-embedded human breast cancer using PACO41162 at dilution of 1:100.



Western Blot. Positive WB detected in: Mouse skeletal muscle tissue. All lanes: TUBG2 antibody at 3 μ g/ml. Secondary. Goat polyclonal to rabbit IgG at 1/50000 dilution. Predicted band size: 52 kDa. Observed band size: 52 kDa.