

# DEGP12 Antibody



PACO41146

---

## Product Information

**Size:**

50ug

**Reactivity:**

Arabidopsis thaliana

**Source:**

Rabbit

**Isotype:**

IgG

**Applications:**

ELISA, WB

**Recommended dilutions:**

ELISA:1:2000-1:10000, WB:1:1000-1:2000

**Protein Background:**

Putative serine protease.

**Gene ID:**

DEGP12

**Uniprot**

Q9LK70

**Synonyms:**

Putative protease Do-like 12, mitochondrial (EC 3.4.21. -), DEGP12

**Immunogen:**

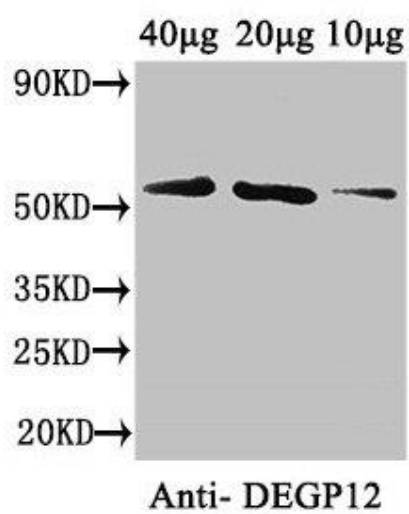
Recombinant Arabidopsis thaliana Putative protease Do-like 12, mitochondrial protein (25-499AA).

**Storage:**

Preservative: 0.03% Proclin 300. Constituents: 50% Glycerol, 0.01M PBS, PH 7.4

## Product Images

---



Western Blot. Positive WB detected in: Arabidopsis thaliana (40µg, 20µg, 10µg). All lanes: DEGP12 antibody at 3.4µg/ml. Secondary. Goat polyclonal to rabbit IgG at 1/50000 dilution. Predicted band size: 57 kDa. Observed band size: 57 kDa.