

XAGE1A Antibody



PACO41142

Product Information

Size:

50ug

Reactivity:

Human

Source:

Rabbit

Isotype:

IgG

Applications:

ELISA, IHC

Recommended dilutions:

ELISA:1:2000-1:10000, IHC:1:20-1:200

Protein Background:

Gene ID:

XAGE1A

Uniprot

Q9HD64

Synonyms:

X antigen family member 1 (XAGE-1) (Cancer/testis antigen 12.1) (CT12.1) (G antigen family D member 2), XAGE1A; XAGE1B; XAGE1C; XAGE1D; XAGE1E, GAGED2 XAGE1

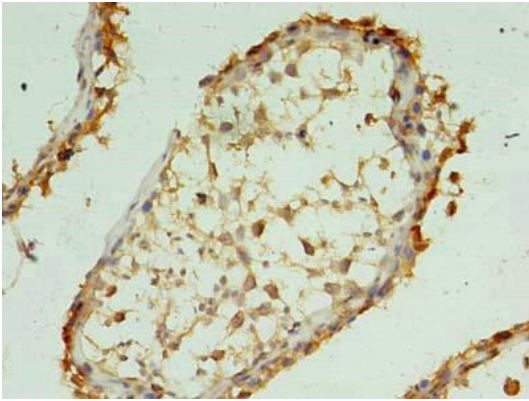
Immunogen:

Recombinant Human X antigen family member 1 protein (1-81AA).

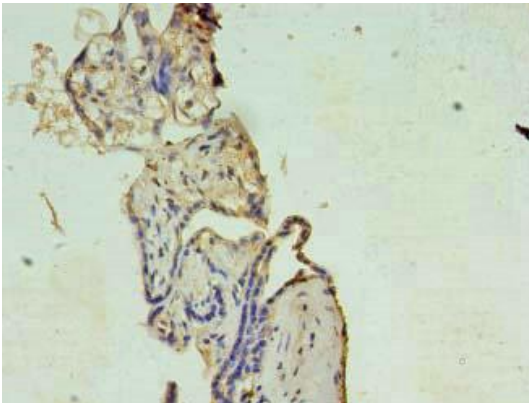
Storage:

Preservative: 0.03% Proclin 300. Constituents: 50% Glycerol, 0.01M PBS, PH 7.4

Product Images



Immunohistochemistry of paraffin-embedded human testis tissue using PACO41142 at dilution of 1:100.



Immunohistochemistry of paraffin-embedded human placenta tissue using PACO41142 at dilution of 1:100.