

PACO41078

Product Information

Size:

50ug

Reactivity:

Human, Mouse

Source:

Rabbit

Isotype:

IgG

Applications:

ELISA, WB

Recommended dilutions:

ELISA:1:2000-1:10000, WB:1:500-1:2000

Protein Background:

Component of the cytosolic iron-sulfur protein assembly (CIA) complex, a multiprotein complex that mediates the incorporation of iron-sulfur cluster into extramitochondrial Fe/S proteins. As a CIA complex component and in collaboration with CIAO1 specifically matures ACO1 and stabilizes IREB2, connecting cytosolic iron-sulfur protein maturation with cellular iron regulation. May play a role in chromosome segregation through establishment of sister chromatid cohesion. May induce apoptosis in collaboration with APAF1.

Gene ID:

CIAO2A

Uniprot

Q9H5X1

Synonyms:

Cytosolic iron-sulfur assembly component 2A, MIP18 family protein FAM96A, CIAO2A, CIA2A, FAM96A

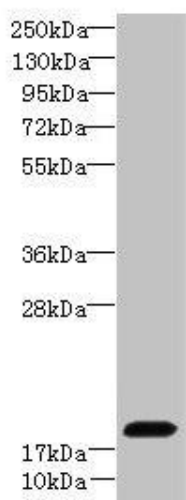
Immunogen:

Recombinant Human Cytosolic iron-sulfur assembly component 2A protein (1-160AA).

Storage:

Preservative: 0.03% Proclin 300. Constituents: 50% Glycerol, 0.01M PBS, PH 7.4

Product Images



Western blot. All lanes: CIAO2A antibody at 8 μ g/ml + NIH/3T3 whole cell lysate. Secondary. Goat polyclonal to rabbit IgG at 1/10000 dilution. Predicted band size: 19, 12 kDa. Observed band size: 19 kDa.