

NBPF3 Antibody



PACO41046

Product Information

Size:

50ug

Reactivity:

Human

Source:

Rabbit

Isotype:

IgG

Applications:

ELISA, WB, IHC

Recommended dilutions:

ELISA:1:2000-1:10000, WB:1:1000-1:5000,
IHC:1:20-1:200

Protein Background:

positive regulation of protein targeting to mitochondrion.

Gene ID:

NBPF3

Uniprot

Q9H094

Synonyms:

Neuroblastoma breakpoint family member 3 (Protein AE2) (Protein SHIIIa4), NBPF3

Immunogen:

Recombinant Human Neuroblastoma breakpoint family member 3 protein (1-252AA).

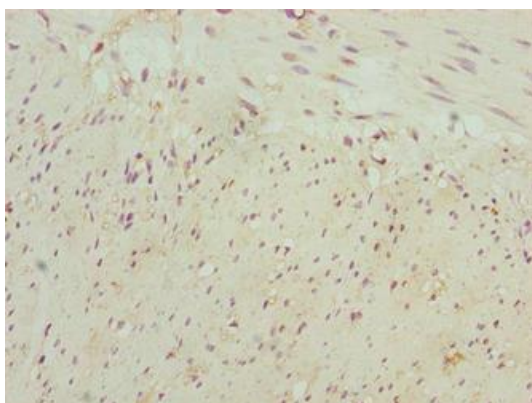
Storage:

Preservative: 0.03% Proclin 300. Constituents: 50% Glycerol, 0.01M PBS, PH 7.4

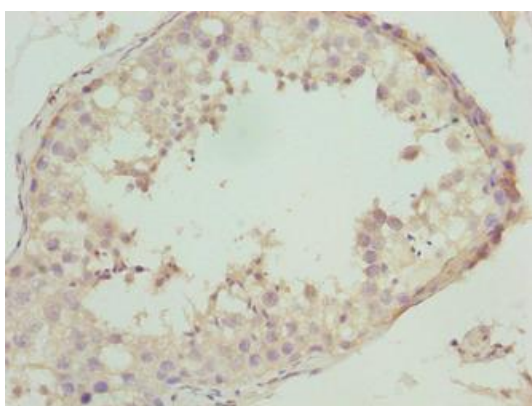
Product Images



Western blot. All lanes: NBPF3 antibody at 1.2 μ g/ml. Lane 1: PC-3 whole cell lysate. Lane 2: HT29 whole cell lysate. Secondary: Goat polyclonal to rabbit IgG at 1/10000 dilution. Predicted band size: 73, 68, 72, 33, 66 kDa. Observed band size: 73 kDa.



Immunohistochemistry of paraffin-embedded human colon tissue using PACO41046 at dilution of 1:100.



Immunohistochemistry of paraffin-embedded human testis tissue using PACO41046 at dilution of 1:100.