

SETD5 Antibody



PACO41030

Product Information

Size:

50ug

Reactivity:

Human

Source:

Rabbit

Isotype:

IgG

Applications:

ELISA, IHC, IF

Recommended dilutions:

ELISA:1:2000-1:10000, IHC:1:20-1:200,
IF:1:50-1:200

Protein Background:

Gene ID:

SETD5

Uniprot

Q9C0A6

Synonyms:

SET domain-containing protein 5, SETD5, KIAA1757

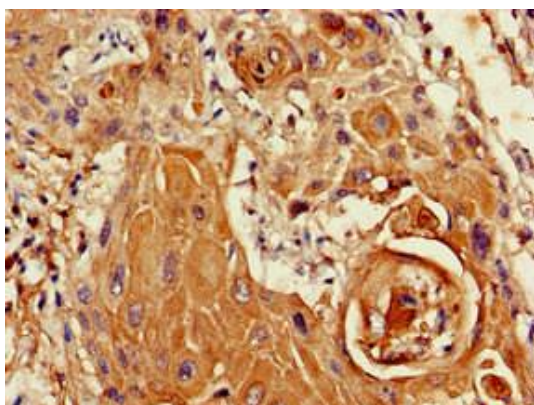
Immunogen:

Recombinant Human SET domain-containing protein 5 protein (519-700AA).

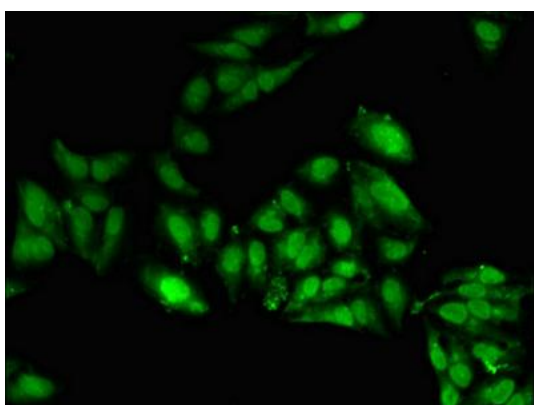
Storage:

Preservative: 0.03% Proclin 300. Constituents: 50% Glycerol, 0.01M PBS, PH 7.4

Product Images



Immunohistochemistry of paraffin-embedded human cervical cancer using PACO41030 at dilution of 1:100.



Immunofluorescent analysis of HeLa cells using PACO41030 at dilution of 1:100 and Alexa Fluor 488-conjugated AffiniPure Goat Anti-Rabbit IgG(H+L).