

# NLRP1 Antibody



PACO41026

---

## Product Information

**Size:**

50ug

**Reactivity:**

Human

**Source:**

Rabbit

**Isotype:**

IgG

**Applications:**

ELISA, IF

**Recommended dilutions:**

ELISA:1:2000-1:10000, IF:1:50-1:200

**Protein Background:****Gene ID:**

NLRP1

**Uniprot**

Q9C000

**Synonyms:**

NACHT, LRR and PYD domains-containing protein 1 (Caspase recruitment domain-containing protein 7) (Death effector filament-forming ced-4-like apoptosis protein) (Nucleotide-binding domain and caspase recruitment domain), NLRP1, CARD7 DEFCAP KIAA0926 NAC NALP1

**Immunogen:**

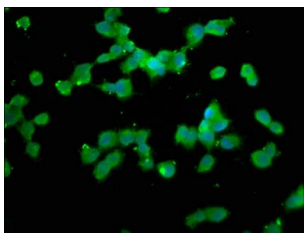
Recombinant Human NACHT, LRR and PYD domains-containing protein 1 protein (1-146AA).

**Storage:**

Preservative: 0.03% Proclin 300. Constituents: 50% Glycerol, 0.01M PBS, PH 7.4

## Product Images

---



Immunofluorescence staining of SH-SY5Y cells with PACO41026 at 1:133, counter-stained with DAPI. The cells were fixed in 4% formaldehyde, permeabilized using 0.2% Triton X-100 and blocked in 10% normal Goat Serum. The cells were then incubated with the antibody overnight at 4°C. The secondary antibody was Alexa Fluor 488-conjugated AffiniPure Goat Anti-Rabbit IgG(H+L).