

KRTAP3-2 Antibody



PACO41014

Product Information

Size:

50ug

Reactivity:

Human

Source:

Rabbit

Isotype:

IgG

Applications:

ELISA, IHC

Recommended dilutions:

ELISA:1:2000-1:10000, IHC:1:20-1:200

Protein Background:

In the hair cortex, hair keratin intermediate filaments are embedded in an interfilamentous matrix, consisting of hair keratin-associated proteins (KRTAP), which are essential for the formation of a rigid and resistant hair shaft through their extensive disulfide bond cross-linking with abundant cysteine residues of hair keratins. The matrix proteins include the high-sulfur and high-glycine-tyrosine keratins.

Gene ID:

KRTAP3-2

Uniprot

Q9BYR7

Synonyms:

Keratin-associated protein 3-2 (High sulfur keratin-associated protein 3.2) (Keratin-associated protein 3.2), KRTAP3-2, KAP3.2 KRTAP3.2

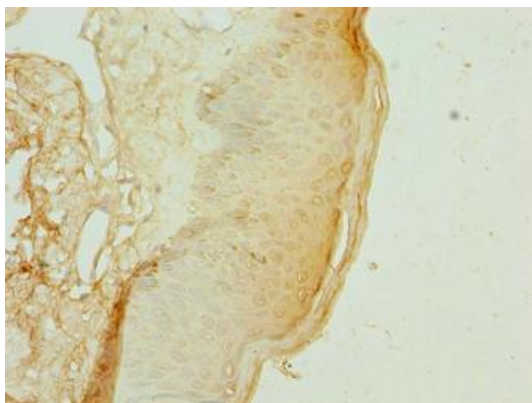
Immunogen:

Recombinant Human Keratin-associated protein 3-2 protein (2-98AA).

Storage:

Preservative: 0.03% Proclin 300. Constituents: 50% Glycerol, 0.01M PBS, PH 7.4

Product Images



Immunohistochemistry of paraffin-embedded human skin tissue using PACO41014 at dilution of 1:100.