

PACO40954

Product Information

Size:

50ug

Reactivity:

Human

Source:

Rabbit

Isotype:

IgG

Applications:

ELISA, IHC

Recommended dilutions:

ELISA:1:2000-1:10000, IHC:1:20-1:200

Protein Background:

The GINS complex plays an essential role in the initiation of DNA replication, and progression of DNA replication forks. GINS4 is important for GINS complex assembly. GINS complex seems to bind preferentially to single-stranded DNA.

Gene ID:

GINS4

Uniprot

Q9BRT9

Synonyms:

DNA replication complex GINS protein SLD5 (GINS complex subunit 4) [Cleaved into: DNA replication complex GINS protein SLD5, N-terminally processed], GINS4, SLD5

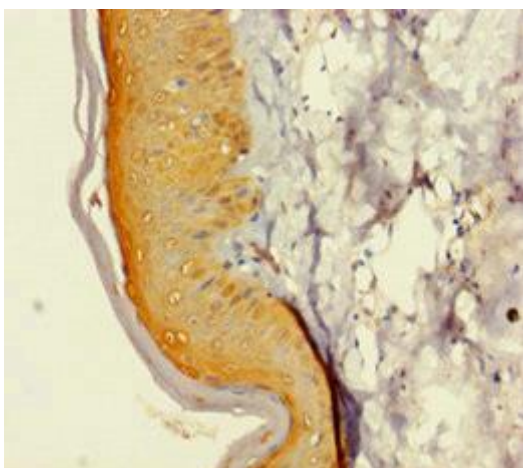
Immunogen:

Recombinant Human DNA replication complex GINS protein SLD5 protein (2-223AA).

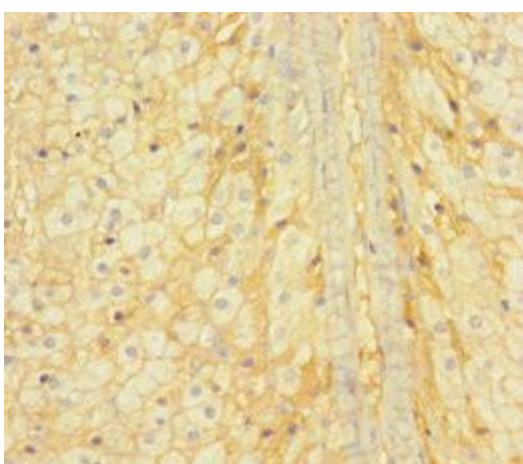
Storage:

Preservative: 0.03% Proclin 300. Constituents: 50% Glycerol, 0.01M PBS, PH 7.4

Product Images



Immunohistochemistry of paraffin-embedded human skin tissue using PACO40954 at dilution of 1:100.



Immunohistochemistry of paraffin-embedded human adrenal gland tissue using PACO40954 at dilution of 1:100.