

# CEP126 Antibody



PACO40934

---

## Product Information

**Size:**

50ug

**Reactivity:**

Human

**Source:**

Rabbit

**Isotype:**

IgG

**Applications:**

ELISA, IHC

**Recommended dilutions:**

ELISA:1:2000-1:10000, IHC:1:20-1:200

**Protein Background:**

May participate in cytokinesis.

**Gene ID:**

CEP126

**Uniprot**

Q9P2H0

**Synonyms:**

Centrosomal protein of 126 kDa, CEP126, KIAA1377

**Immunogen:**

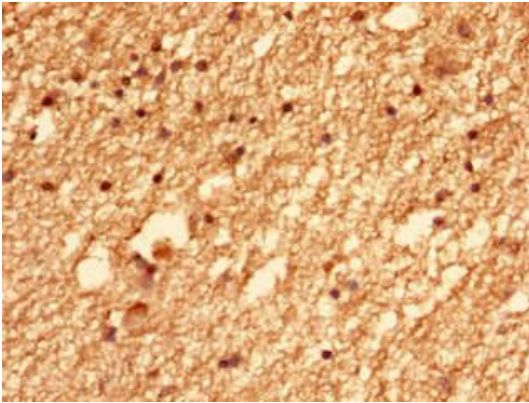
Recombinant Human Centrosomal protein of 126 kDa protein (559-670AA).

**Storage:**

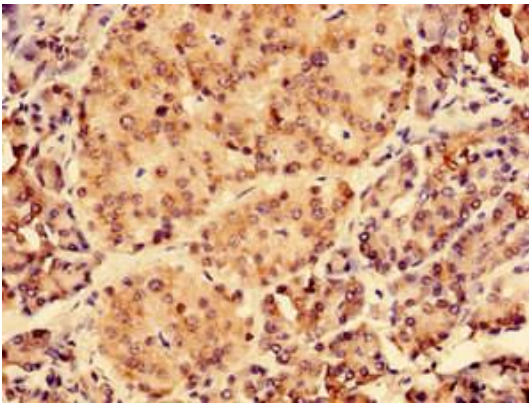
Preservative: 0.03% Proclin 300. Constituents: 50% Glycerol, 0.01M PBS, PH 7.4

## Product Images

---



Immunohistochemistry of paraffin-embedded human brain tissue using PACO40934 at dilution of 1:100.



Immunohistochemistry of paraffin-embedded human pancreatic tissue using PACO40934 at dilution of 1:100.