

ORMDL1 Antibody



PACO40926

Product Information

Size:

50ug

Reactivity:

Human

Source:

Rabbit

Isotype:

IgG

Applications:

ELISA, IHC, IF

Recommended dilutions:

ELISA:1:2000-1:10000, IHC:1:20-1:200,
IF:1:50-1:200

Protein Background:

Negative regulator of sphingolipid synthesis.

Gene ID:

ORMDL1

Uniprot

Q9P0S3

Synonyms:

ORM1-like protein 1 (Adoplin-1), ORMDL1

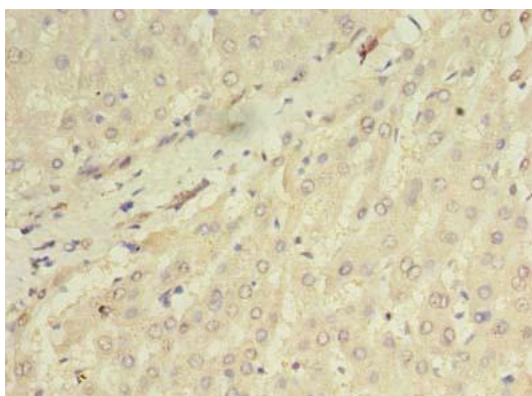
Immunogen:

Recombinant Human ORM1-like protein 1 protein (48-100AA).

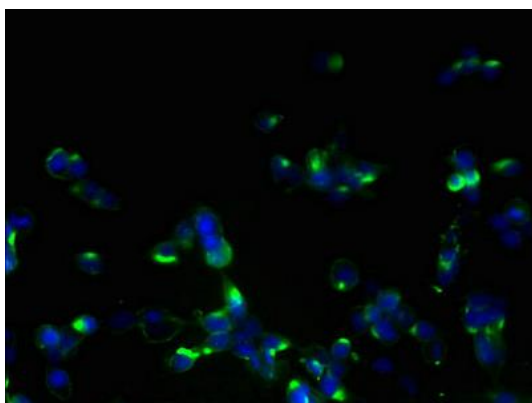
Storage:

Preservative: 0.03% Proclin 300. Constituents: 50% Glycerol, 0.01M PBS, PH 7.4

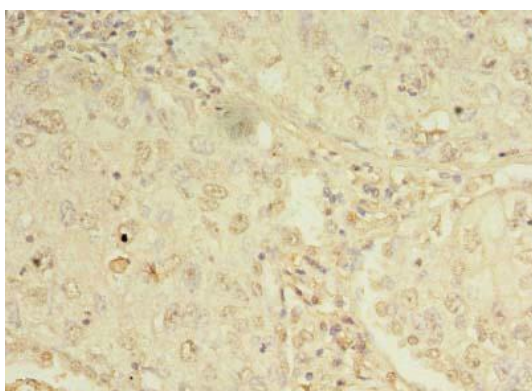
Product Images



Immunohistochemistry of paraffin-embedded human liver tissue using PACO40926 at dilution of 1:100.



Immunofluorescent analysis of 293T cells using PACO40926 at dilution of 1:100 and Alexa Fluor 488-conjugated AffiniPure Goat Anti-Rabbit IgG(H+L).



Immunohistochemistry of paraffin-embedded human lung cancer using PACO40926 at dilution of 1:100.