

# ASB6 Antibody



PACO40894

---

## Product Information

**Size:**

50ug

**Reactivity:**

Human

**Source:**

Rabbit

**Isotype:**

IgG

**Applications:**

ELISA, IHC

**Recommended dilutions:**

ELISA:1:2000-1:10000, IHC:1:20-1:200

**Protein Background:**

Probable substrate-recognition component of a SCF-like ECS (Elongin-Cullin-SOCS-box protein) E3 ubiquitin-protein ligase complex which mediates the ubiquitination and subsequent proteasomal degradation of target proteins.

**Gene ID:**

ASB6

**Uniprot**

Q9NWX5

**Synonyms:**

Ankyrin repeat and SOCS box protein 6 (ASB-6), ASB6

**Immunogen:**

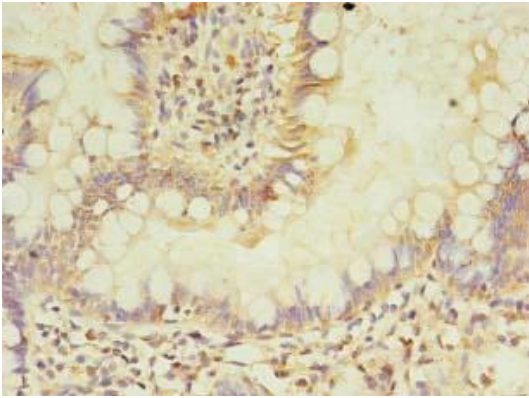
Recombinant Human Ankyrin repeat and SOCS box protein 6 protein (1-197AA).

**Storage:**

Preservative: 0.03% Proclin 300. Constituents: 50% Glycerol, 0.01M PBS, PH 7.4

## Product Images

---



Immunohistochemistry of paraffin-embedded human small intestine tissue using PACO40894 at dilution of 1:100.