

# PLEKHJ1 Antibody



PACO40886

---

## Product Information

**Size:**

50ug

**Reactivity:**

Human

**Source:**

Rabbit

**Isotype:**

IgG

**Applications:**

ELISA, IHC

**Recommended dilutions:**

ELISA:1:2000-1:10000, IHC:1:20-1:200

**Protein Background:****Gene ID:**

PLEKHJ1

**Uniprot**

Q9NW61

**Synonyms:**

Pleckstrin homology domain-containing family J member 1 (PH domain-containing family J member 1) (Guanine nucleotide-releasing protein x), PLEKHJ1, GNRPX

**Immunogen:**

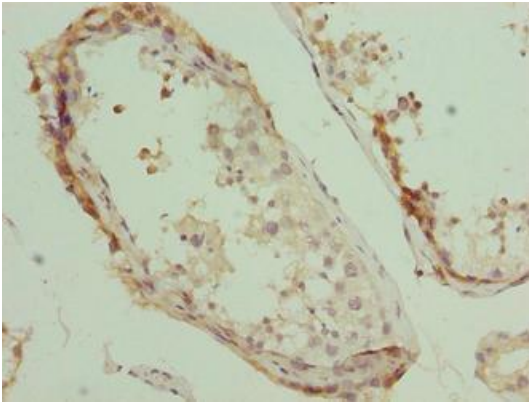
Recombinant Human Pleckstrin homology domain-containing family J member 1 protein (1-149AA).

**Storage:**

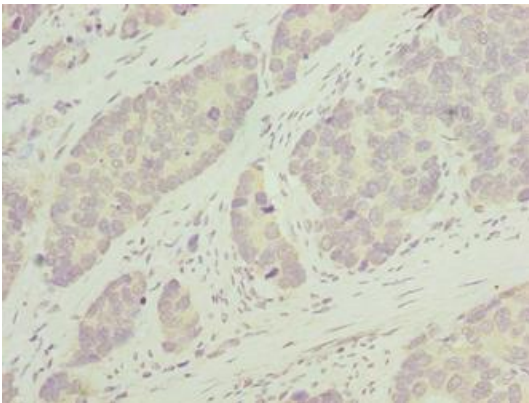
Preservative: 0.03% Proclin 300. Constituents: 50% Glycerol, 0.01M PBS, PH 7.4

## Product Images

---



Immunohistochemistry of paraffin-embedded human testis tissue using PACO40886 at dilution of 1:100.



Immunohistochemistry of paraffin-embedded human gastric cancer using PACO40886 at dilution of 1:100.