

# SPATS2L Antibody



PACO40874

---

## Product Information

**Size:**

50ug

**Reactivity:**

Human

**Source:**

Rabbit

**Isotype:**

IgG

**Applications:**

ELISA, WB

**Recommended dilutions:**

ELISA:1:2000-1:10000, WB:1:500-1:2000

**Protein Background:**

protein complex, poly(A) RNA binding.

**Gene ID:**

SPATS2L

**Uniprot**

Q9NUQ6

**Synonyms:**

SPATS2-like protein (DNA polymerase-transactivated protein 6) (Stress granule and nucleolar protein) (SGNP), SPATS2L, DNAPTP6

**Immunogen:**

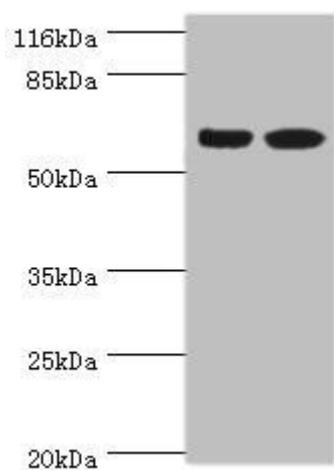
Recombinant Human SPATS2-like protein (2-488AA).

**Storage:**

Preservative: 0.03% Proclin 300. Constituents: 50% Glycerol, 0.01M PBS, PH 7.4

## Product Images

---



Western blot. All lanes: SPATS2L antibody at 8 $\mu$ g/ml. Lane 1: CEM whole cell lysate. Lane 2: HepG2 whole cell lysate. Secondary. Goat polyclonal to rabbit IgG at 1/10000 dilution. Predicted band size: 62, 55, 66, 63 kDa. Observed band size: 62 kDa.