

KRCC1 Antibody



PACO40850

Product Information

Size:

50ug

Reactivity:

Human

Source:

Rabbit

Isotype:

IgG

Applications:

ELISA, IF

Recommended dilutions:

ELISA:1:2000-1:10000, IF:1:50-1:200

Protein Background:

mitophagy in response to mitochondrial depolarization.

Gene ID:

KRCC1

Uniprot

Q9NPI7

Synonyms:

Lysine-rich coiled-coil protein 1 (Cryptogenic hepatitis-binding protein 2), KRCC1, CHBP2

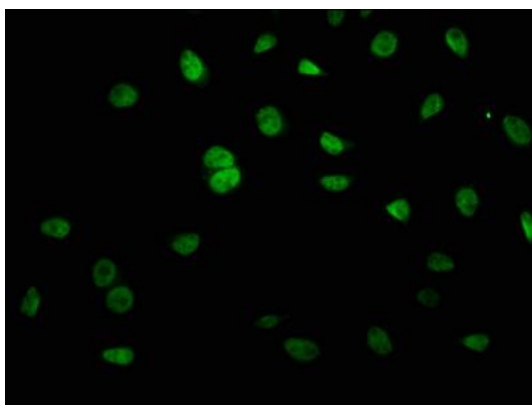
Immunogen:

Recombinant Human Lysine-rich coiled-coil protein 1 protein (1-259AA).

Storage:

Preservative: 0.03% Proclin 300. Constituents: 50% Glycerol, 0.01M PBS, PH 7.4

Product Images



Immunofluorescence staining of A549 cells with PACO40850 at 1:66, counter-stained with DAPI. The cells were fixed in 4% formaldehyde, permeabilized using 0.2% Triton X-100 and blocked in 10% normal Goat Serum. The cells were then incubated with the antibody overnight at 4°C. The secondary antibody was Alexa Fluor 488-conjugated AffiniPure Goat Anti-Rabbit IgG(H+L).