

PACO40830

---

## Product Information

**Size:**

50ug

**Reactivity:**

Human, Mouse

**Source:**

Rabbit

**Isotype:**

IgG

**Applications:**

ELISA, WB, IHC

**Recommended dilutions:**

ELISA:1:2000-1:10000, WB:1:1000-1:5000,  
IHC:1:20-1:200

**Protein Background:**

Plasma membrane-associated small GTPase which cycles between an active GTP-bound and an inactive GDP-bound state. Causes the formation of thin, actin-rich surface projections called filopodia. Functions cooperatively with CDC42 and Rac to generate additional structures, increasing the diversity of actin-based morphology.

**Gene ID:**

RHOF

**Uniprot**

Q9HBH0

**Synonyms:**

Rho-related GTP-binding protein RhoF (Rho family GTPase Rif) (Rho in filopodia), RHOF, ARHF RIF

**Immunogen:**

Recombinant Human Rho-related GTP-binding protein RhoF protein (1-170AA).

**Storage:**

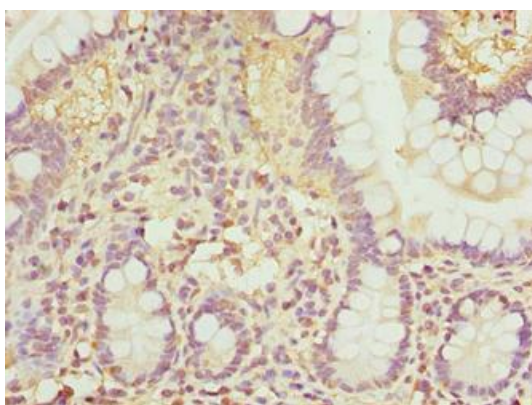
Preservative: 0.03% Proclin 300. Constituents: 50% Glycerol, 0.01M PBS, PH 7.4

## Product Images

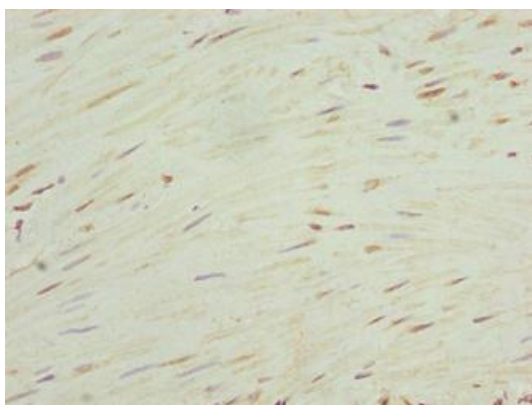
---



Western blot. All lanes: RHOV antibody at 3 $\mu$ g/ml. Lane 1: Colo320 whole cell lysate. Lane 2: RAW264.7 whole cell lysate. Secondary: Goat polyclonal to rabbit IgG at 1/10000 dilution. Predicted band size: 24, 19 kDa. Observed band size: 24 kDa.



Immunohistochemistry of paraffin-embedded human small intestine tissue using PACO40830 at dilution of 1:100.



Immunohistochemistry of paraffin-embedded human colon cancer tissue using PACO40830 at dilution of 1:100.