

PACO40822

Product Information

Size:

50ug

Reactivity:

Human

Source:

Rabbit

Isotype:

IgG

Applications:

ELISA, WB, IHC

Recommended dilutions:

ELISA:1:2000-1:10000, WB:1:1000-1:5000,
IHC:1:20-1:200

Protein Background:

O-methyltransferase that methylates glutamate residues of target proteins to form gamma-glutamyl methyl ester residues. Methylates PCNA, suggesting it is involved in the DNA damage response.

Gene ID:

ARMT1

Uniprot

Q9H993

Synonyms:

Protein-glutamate O-methyltransferase (EC 2.1.1. -) (acid, c residue methyltransferase 1), ARMT1, C6orf211

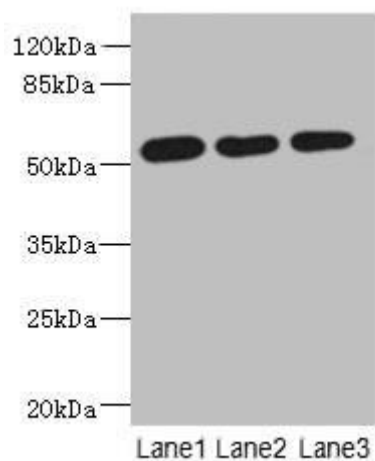
Immunogen:

Recombinant Human Protein-glutamate O-methyltransferase protein (2-250AA).

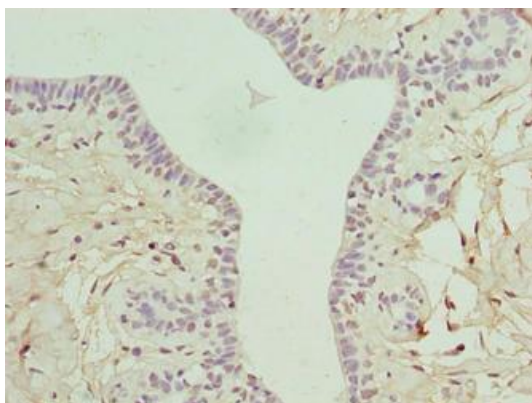
Storage:

Preservative: 0.03% Proclin 300. Constituents: 50% Glycerol, 0.01M PBS, PH 7.4

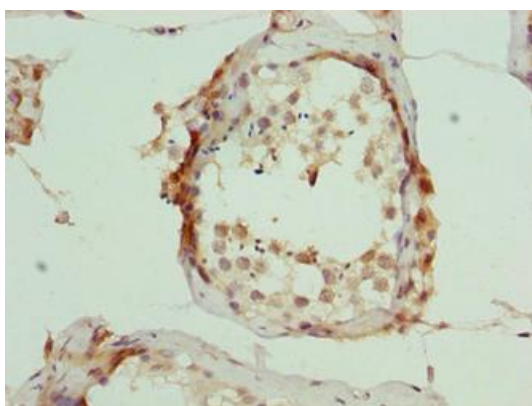
Product Images



Western blot. All lanes: ARMT1 antibody at 0.6 μ g/ml. Lane 1: MCF-7 whole cell lysate. Lane 2: A431 whole cell lysate. Lane 3: 293T whole cell lysate. Secondary: Goat polyclonal to rabbit IgG at 1/10000 dilution. Predicted band size: 52 kDa. Observed band size: 52 kDa.



Immunohistochemistry of paraffin-embedded human breast cancer using PACO40822 at dilution of 1:100.



Immunohistochemistry of paraffin-embedded human testis tissue using PACO40822 at dilution of 1:100.