

TUBB1 Antibody



PACO40802

Product Information

Size:

50ug

Reactivity:

Human, Mouse

Source:

Rabbit

Isotype:

IgG

Applications:

ELISA, WB, IHC

Recommended dilutions:

ELISA:1:2000-1:10000, WB:1:1000-1:5000,
IHC:1:20-1:200

Protein Background:

Tubulin is the major constituent of microtubules. It binds two moles of GTP, one at an exchangeable site on the beta chain and one at a non-exchangeable site on the alpha chain.

Gene ID:

TUBB1

Uniprot

Q9H4B7

Synonyms:

Tubulin beta-1 chain, TUBB1

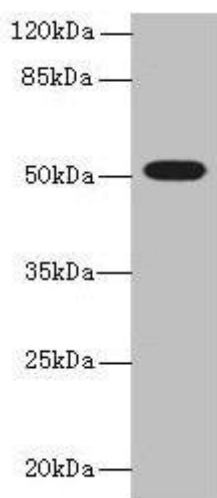
Immunogen:

Recombinant Human Tubulin beta-1 chain protein (270-451AA).

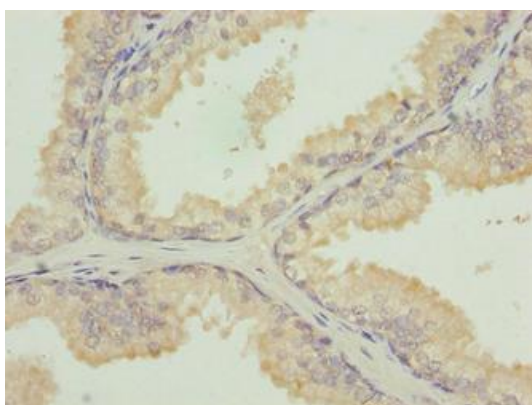
Storage:

Preservative: 0.03% Proclin 300. Constituents: 50% Glycerol, 0.01M PBS, PH 7.4

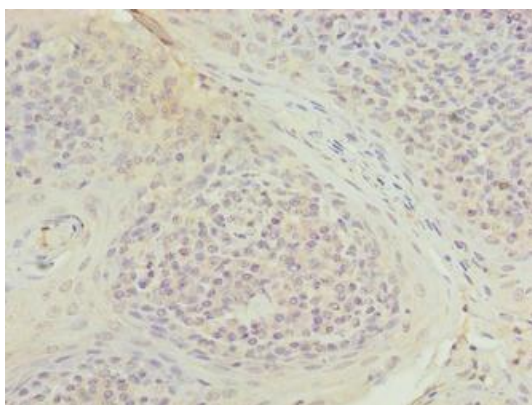
Product Images



Western blot. All lanes: TUBB1 antibody at 0.5 μ g/ml + Mouse brain tissue. Secondary. Goat polyclonal to rabbit IgG at 1/10000 dilution. Predicted band size: 51 kDa. Observed band size: 51 kDa.



Immunohistochemistry of paraffin-embedded human prostate cancer using PACO40802 at dilution of 1:100.



Immunohistochemistry of paraffin-embedded human tonsil tissue using PACO40802 at dilution of 1:100.